



GOJI

Vol. 68, No. 7
JULY 2013



NEWSLETTER
of the

Honpa Hongwanji
Hawaii Betsuin

hibetsuin@hawaii.rr.com

Hongwanji Mission
of Hawaii

Five Year Theme:
"Path of Entrusting"

2013 Slogan:
"Live the Teachings"

BETSUIN MINISTERS

Chief Minister:
Rev. Tatsuo Muneto

Ministerial Staff

Rev. Tomo Hojo
Rev. Bert Sumikawa
Rev. Arthur Kaufmann

Obon observances begin on Sunday, July 7th with Obon Services: Guest Speaker, Rev. Mari Nishiyama

This year's Obon observances begins with the main Obon Services scheduled for Sunday July 7th with guest speaker, Rev. Mari Nishiyama at the 8:00 am Japanese service and the 10:00 am English, Family Service.



Rev. Mari Nishiyama is from a temple family having grown up in her family's temple in Fukukoka, Kyushu, Japan. She pursued her undergraduate studies at Kyoto University of Foreign Language majoring in English Literature. Subsequent to her undergraduate studies, she changed her area of interest to Buddhist Studies at Ryukoku University. While attending Roukoku University as a special student, she studied at Dendoin (the Buddhist Institute for the Propagation of Buddhism). She took a course in Shinran Shonin's teachings, Shinshu-gaku (Shinshu Studies), and participated in the Honzan's propagation program for three years.

Rev. Nishiyama came to Hawaii in February 2003. She was assigned to the Hilo Betsuin for five years. After her Hilo assignment, Rev. Nishiyama was transferred to the Lahaina Hongwanji and then back to the Big Island at the Four Temple Council. In August 2012 she was transferred to the Pearl City Hongwanji where she currently serves as the Resident Minister.

Rev. Nishiyama says she enjoys sports, but is not fond of swimming. She does, however, enjoy taking a nice long walk!

Please join us in honoring those who have passed on during this season of Obon!

Obon Service Schedule:

8:00 am Service in Japanese – Rev, Mariko Nishiyama
10:00 am English Family Service - Rev. Mariko Nishiyama
1:00 pm Nitchu Service in Japanese – Rev. Tatsuo Muneto

Please turn to page 3 for this year's Bon Mairi Week Schedule.

Obon...Obon... It's Festival Time!

Rimban's Column: "Promote True Benefits Of Temple Membership" Rev Tatsuo Muneto



According to the Pew Survey done several years ago, more and more people in America are interested in Buddhism. One of the reasons is that

Buddhism, in general, prescribes meditation to be practiced. Jodo Shinshu as a spiritual force has great potentiality to help people in American to grow spiritually rich and to enable them to live this life fully with a perspective into the life to come.

It is my fervent wish that both the clergy and the lay of the Hongwanji in Hawaii evaluate the benefits of becoming

Hongwanji members. In receiving the religious benefits of learning the teachings we enrich our lives. Then we joyfully can spread the teaching among our families, friends, and temple community.

The temple leadership must be interested in inviting more new people to the temple. We should not be too concerned about the so-called tangible benefits such as giving the members a discount for the funeral fee. The spiritual benefits of learning the Dharma have to be defined and communicated to the new people and present members as well.

The religious benefits of joining the Betsuin membership are received through attending the following temple religious, educational, and cultural programs:

- Sunday religious services and fellowship time, both in English and Japanese,
- Children's and youth programs, including Dharma School services and classes and Jr. YBA,
- Six major services and the programs that are held on these occasions,
- Dharma Study classes to systematically study the teachings of both general Buddhism and Jodo Shin Buddhism. Today, the Dharma Light Project provides classes on Buddhism and related topics,
- Counseling sessions by the ministers that include referral services to the professional counseling services in the community.
- Temple-affiliated organizations such as Buddhist Women's Association, Sudhana Fellowship, Choir, Wednesday Volunteers' Group and others,

- Cultural classes for the studying of Sumie, flower arrangement, calligraphy, Hawaiiiana, Japanese language and others.
- others

The most recently developed program at Hawaii Betsuin provides End-of-Life care and support to the temple members who have lost their loved ones. The name of the group is called Compassionate Care Committee, and the ministers and the members of this committee are providing funeral counseling and support to the temple members. In the future, the support will also be provided to non-temple members who need assistance.

Another development in the temple is a committee that welcomes visitors to the Sunday English service to make them feel welcomed and comfortable in the temple and service.

The religious or spiritual benefits mentioned above are provided to anyone who comes to our temple. But the present members are the ones who are committed to encourage one another to pursue the path of being saved from the pain and sorrow of human existence, and live their lives joyfully saying the Nembutsu, "Namo amida butsu."

Let us receive this spiritual gift of Amida. And as grateful and proud members of Jodo Shinshu, let us invite others to receive this gift.



GOJI

The **GOJI** is a monthly publication of the Honpa Hongwanji Hawaii Betsuin, Tel. (808) 536-7044.. There is no newsletter published for the month of August.

DEADLINE:

Articles must be submitted no later than the 10th of the month prior to publication. Mail (1727 Pali Hwy, Honolulu, HI, 96813), fax (536-0919), or e-mail (hibetsuin@hawaii.rr.com) all items to the **GOJI**. Please include your name and contact information. Original images should be labeled on the reverse side with caption and return information.

GOJI STAFF:

Editorial: *Jo desMarets; Dianne Ida, Randy Kawamoto, Ralston Nagata, Mary Tanouye; Rev. Tomo Hojo, Japanese section editor,*
Production: *Ron Suzuki, Stacy Bradshaw, Alice Omura, Setsu Takashige, Alice Tando, Kimiyo Miyose*

Circulation: *Stacy Bradshaw*

Contributing reporters from *Hongwanji Mission School, Buddhist Women's Association, Dharma School & Parents, Project Dana, Wednesday Gang and Gals, Boy Scouts, Girl Scouts, Pacific Buddhist Academy, and the Kyodan*

The opinions expressed by individual contributors are their own and do not necessarily reflect those of the Honpa Hongwanji Hawaii Betsuin.



Please find
In Memoriam
for May 2013
on page 12

Maha!o!

Bon Mairi Weekend Scheduled for July 12 - 14

The Honpa Hongwanji Hawaii Betsuin 2013 Obon Mairi memorial services weekend will be on July 12, 13, and 14. You and your family are cordially invited to join us in reflecting upon the oneness of life through the practice of honoring departed family members.

FRIDAY JULY 12th

4:00 pm to 7:00 pm - Private Family Services
6:00 pm - Combined Family Service (English)

SATURDAY July 13th

8:00 am to 7:00 pm - Private Family Services
10:00 am - Combined Family Service (English)
6:00 pm - Combined Hatsubon* Service (English)

* First Anniversary Memorial Svc.

SUNDAY JULY 14TH

8:00 am to 7:00 pm - Private Family Services
10:00 am - Combined Service (Eng. & Japanese)
6:00 pm - Combined Hatsubon* Service (Eng. Japanese)

*First Anniversary

Please note that appointments for individual services will not be accepted. Just come within the dates and times listed on the Bon Mairi Schedule that is convenient for your family. The registration desk will be located in the Temple's Social Hall. Directional signs will be posted to assist you. Light refreshments will be provided in the Social Hall.

NOTE: If you are unable to come during our special Obon Mairi weekend, please call 536-7044 to schedule an appointment for an alternate date.

Bon Dances are scheduled every weekend at temples across the Island

In recent years it appears that Obon is becoming more popular with the greater community who are coming to join us at the Obon dances. Many people do not have a way of remembering their loved ones who have died. We, as Buddhists, have been very fortunate to have had this way of remembering our family members, loved ones and friends who are beyond this life. It is a way to expressing our gratitude and love to those who came before us. Although the Betsuin's Bon Dance was already held, please consider going to one of our sister temples' Bon Dance to welcome the Spirits of Loved Ones during this Obon season.

BWA Sponsoring Blood Drive For Hawaii Blood Bank

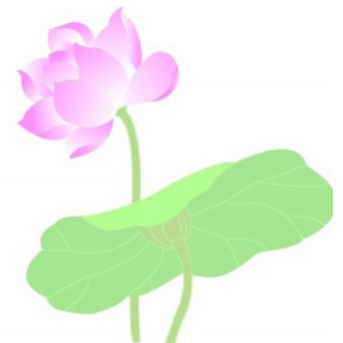
The Hawaii Betsuin Buddhist Women Association will be sponsoring a day when all our Betsuin members and friends can donate blood to the Hawaii Blood Bank here at the Betsuin.

We are looking for strong, able bodied healthy men and women to donate blood for a worthy cause. Pre-registration is required to donate blood and will be done prior to November 16. Those of you who regularly donate your blood may wish to donate at Hawaii Betsuin in the month of November.

If you are thinking of having a tattoo, whether they be on your body or cosmetic tattoo on your face (eyebrows and lips), please wait until after November. Those people with tattoos cannot donate blood unless the tattoo was done over a year ago.

Please stay healthy so you can donate your blood in November. First time donors will find it an exciting adventure, and it isn't painful.

If you plan to donate blood, be sure to eat a good breakfast and drink plenty of fluids before coming to the temple to donate blood.



Temple News and Activities



BOY SCOUT TROOP

Douglas Yanagihara, Troop 49 Boy Scout

Punchbowl "Good Turn" Service Project

Troop 49 Boy Scouts spent the morning of Saturday, May 25, 2013 picking plumeria flowers at Chaminade University / St Louis School campus, Tripler Army Medical Center, Moanalua Middle and Elementary School campuses and various other locations. After picking flowers, the Scouts met at the Honpa Hongwanji Social Hall to sew lei. They sewed about 1300 lei which were used to place on the gravesites at the National Memorial Cemetery of the Pacific at Punchbowl. This annual "good turn" Boy Scout service project is held every year on the Sunday before Memorial Day.

On Sunday, May 26th, Troop 49 Boy Scouts hiked from the temple to Punchbowl and joined various Boy Scout troops from all over Oahu for an Interfaith Worship Memorial Service. After the service, hundreds of Scouts decorated the 34,000 graves with lei and American flags. The Scouts felt good showing their respect and honoring the fallen American heroes.



Scouts Justin Kam, Preston Wong, Trenton Omuro and Noah Tatsuyama gather plumeria on the Chaminade University campus to string into leis to be placed on graves at Punchbowl for Memorial Day.

Pumpkins, Dharma and Fun 2013 Nembutsu Gathering Sponsored by Honolulu Hongwanji District Council

(Honpa Hongwanji Hawaii Betsuin, Jikoen Hongwanji, Kailua Hongwanji and Moiliili Hongwanji)

Alan Goto

The Honolulu Hongwanji Council is planning a sangha gathering for families and friends of all ages to experience Shin Buddhist values (interdependence, compassion and gratitude) through activities on Sunday, October 27, 2013 from 8:30 am to 2:30 pm in the Hawaii Betsuin Social Hall.

Sangha members of all ages from all four Honolulu Hongwanji temples will gather to participate in an event that combines the American tradition of Halloween with the Dharma and enjoy good fellowship.

Participants may choose to take a bus ride to "the pumpkin patch" (Aloun Farms) to select pumpkins, return to Hawaii Betsuin for pumpkin carving and take part in a contest. In addition, artistic and musical activities will offer participants opportunities to engage in new experiences to "grow" a sense of gratitude for the self and our community

More event information will be furnished throughout the summer and when Dharma School starts again. This gathering is open to people of all ages.

**SAVE THIS DATE!
SUN., OCT. 27, 2013
(8:30 AM TO 2:30 PM)**



Temple News and Activities

Quiet Sitting

When people think about Buddhism, they immediately think about meditation as a universal Buddhist practice. For many years, people who have inquired about meditation at Hawaii Betsuin have been directed to other Buddhist traditions that offer formal and specific meditation practices.

For us as Jodo Shin followers, we generally conduct our lives by sincerely and mindfully establishing an environment that nurtures the recitation of the Nembutsu in gratitude for the embrace of universal wisdom and compassion. Nevertheless, when we participate in religious services, we engage in meditative experiences as we listen to the kansho (ringing of the gong as a call to a religious service); chant the sutras and the Shoshin Nembutsu Ge (a gatha); and sing the Nembutsu at the end of each service. For many of us who participate in cultural activities such as tea ceremony, flower arranging, Japanese calligra-

phy and ink drawing; traditional martial arts such as akido, judo and kendo; and wellness and spiritual activities such as tai chi, chi gong and yoga; we are definitely offered opportunities for meditative experiences. In addition, most art and musical endeavors offer opportunities for mindful, heartfelt and spiritual experiences that may be more important than the finished work. Therefore, meditation as a religious or spiritual practice is not foreign or outside of our everyday life. Each of our lives may be a continuing series for meditative moments that provides an awareness of our individual uniqueness and gratitude for our lives in a community.

To further enrich the quality of our physical, mental, emotional and spiritual aspects of our lives, meditation or quiet sitting is offered at Hawaii Betsuin every Wednesday night at 7:00 pm for one hour and Sunday mornings at 9:00 am for about 30 minutes

before our 10:00 am religious service. A small group of people regularly come together to sit quietly and create a sacred space that is welcoming, mindful and loving.

If you are interested in meditation, but not able to attend the currently scheduled sessions, please contact Alan Goto by email at alango95@yahoo.com to suggest additional sessions for possible consideration. Contact Alan for more information about our current meditation offerings.

Alan Goto

Family Promise (information from website)

Family Promise of Hawai'i is a new and innovative program to help families with children escape homelessness. Our mission is to mobilize existing community resources to help families experiencing homelessness transition to sustainable independence.

We do this by developing, training, and supporting a network of interfaith congregations whom host families quarterly. Each host site provides a safe place to sleep, good food, and generous hospitality. Guests stay at a host site for a week, then move onto

another host site.

During the day, guests work, pursue employment, attend school, or enroll in job training. A Family Center provides access to phones, mail, fax, a copier, showers, and laundry facilities. The program provides transportation to and from the host sites and the Family Center. Three to five families (up to 14 people) can be accommodated by each network at any given time. In March 2006, the Windward Network and Family Center opened; and the Honolulu network opened in July 2007.

Family Promise Eligibility Criteria

There must be at least one parent and one child in the family.

Applicants should be highly motivated to make positive changes in their lives.

Applicants should be flexible since they will move to a new host site every week.

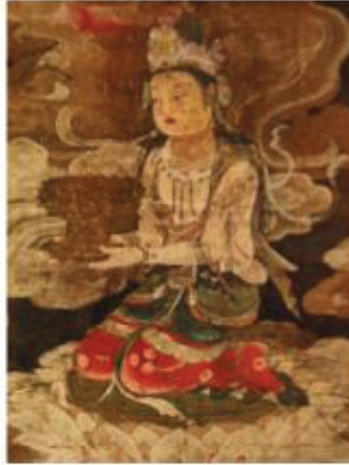
Because we are a volunteer-run organization, applicants should not have current psychological problems or serious domestic violence issues.

All adult family members must be working, in school or seeking employment. All children must be in school or day care shortly after joining the program.

Family members are not allowed to use illegal drugs or alcohol while in the Network.

**“Hear my concerns
as I enter the
twilight of my life...”**

An intergenerational retreat
sponsored by the
**Honpa Hongwanji Mission
of Hawaii
End-of-Life Committee**



**For family and friends to listen and reflect on
our elders' wishes and concerns
~ health, religious, cultural ~
to support them as they enter the
twilight of their lives.**

SAVE THE DATE!

Saturday, September 28, 2013 8:30 ~ 2:00 pm
Wahiawa Hongwanji, Oahu

Registration : \$20/\$10 for students
Forms coming to your temple soon!

Questions? ernieoshiro@gmail.com

Kyodan: New Ministers Arriving from Japan

Rev. Mieko Majima ... She has been studying Bukkyo-Gaku at Ryukoku University Graduate Course. She is scheduled to arrive at Hawaii on June 24, 2013.

Rev. Satoshi Tomioka ... Graduated Ryukoku University Graduate Course (Major: Shinshugaku). Rev. Tomioka will have an audience with Gomonshu and receive the official assignment to HHMH on June 27, 2013. He is scheduled to arrive at Hawaii on June 30, 2013.

Rev. Shinji Kawagoe ... Graduated Chuo Bukkyo Gakuin "Kenkyuka". Rev. Kawagoe will have an audience with Gomonshu and receive the official assignment to HHMH on June 27, 2013. He is scheduled to arrive at Hawaii on June 30, 2013.

*These three new ministers will go through the following orientation before being assigned to the temples as of August 1, 2013. **Orientation at HQ ... July 1-16, 2013**
Orientation at Hawaii Betsuin ... July 17-31, 2013 (under the supervision of Rimban Tatsuo Muneto)
Orientation at Hilo Betsuin ... July 17-31, 2013 (under the supervision of Rimban Jeffrey Soga)



Owen Lee Oshima
Pre-Need Counselor

1347 Nuuanu Avenue
Honolulu, Hawaii 96817
Phone: 808 529-0373
Fax: 808 536 9588
Cellular: 808 741 6936

BUDDHIST ALTARS & ACCESSORIES (Butsudan & Butsugu)

By Appointment Only

1202 Kona St, Honolulu, HI 96814

Phone: 973-0320; 592-0115

Fax: 592-0119

www.iidastore.com



Honpa Hongwanji Hawaii Betsuin Events Calendar

The Goji provides this monthly Events Calendar to keep everyone informed about cultural activities at our temple.

Please help us by submitting information by email to
 hibetsuin@hawaii.rr.com,
 or by calling the Betsuin office at 536-7044.

July 2013

Sunday	Monday	Tuesday	Wednesday	Thursday	Friday	Saturday
	1 9 am – 1:30 pm Rhythm & Life	2 9 am – 1:30 pm Rhythm & Life 6-8 pm Judo	3 9 am Wednesday Grp 9 am Japanese Language 1 pm Flower Arrangement 7 pm Meditation 7 pm Bon Dancercise	4 9 am Flower Arrangement 11:30 am Sahn Bo Dahn 5:30 pm Choir Practice 6-8 pm Judo 7 pm Ballroom Dancing	5 9 am Project Dana Dancers' Practice	6 9-11 am Judo 1 pm Taichi
7 Bon Services 8:00 – Rev. Mariko Nishiyama 10:00 – Rev. Mariko Nishiyama 1:00 – Rev. Muneto	8 9 am – 1:30 pm Rhythm & Life	9 9 am – 1:30 pm Rhythm & Life 9:30 am – Shodo 6-8 pm Judo	10 9 am Wednesday Grp 9 am Japanese Language 1 pm Flower Arrangement 7 pm Meditation 7 pm Bon Dancercise	11 9 am Flower Arrangement 11:30 am Sahn Bo Dahn 5:30 pm Choir Practice 6-8 pm Judo 7 pm Ballroom Dancing	12 9 am Project Dana Dancers' Practice 9 am – Sumie Class	13 9-11 am Judo 1 pm Taichi <u>Bon Mairi Weekend</u> 10 am – Combined Svc. (Rev. Kaufmann) 6 pm – Combined Hatsubon Service
14 <u>Bon Mairi Weekend</u> 10 am – Combined Service (Rev. Sumikawa) 6 pm – Combined Hatsubon Service (Rev. Muneto)	15 9 am – 1:30 pm Rhythm & Life	16 9 am – 1:30 pm Rhythm & Life 6-8 pm Judo	17 9 am Wednesday Grp 1 pm Flower Arrangement 7 pm Meditation 7 pm Bon Dancercise	18 9 am Flower Arrangement 11:30 am Sahn Bo Dahn 5:30 pm Choir Practice 6-8 pm Judo 7 pm Ballroom Dancing	19 9 am Project Dana Dancers' Practice	20 9-11 am Judo 1 pm Taichi
21 8:00 – Rev. Muneto 10:00 – Rev. Kaufmann 1:00 – Rev. Hojo	22 9 am – 1:30 pm Rhythm & Life	23 9 am – 1:30 pm Rhythm & Life 9:30 am – Shodo 6-8 pm Judo	24 9 am Wednesday Grp 1 pm Flower Arrangement 7 pm Meditation 7 pm Bon Dancercise	25 11:30 am Sahn Bo Dahn 5:30 pm Choir Practice 6-8 pm Judo 7 pm Ballroom Dancing	26 9 am Project Dana Dancers' Practice 9 am – Sumie Class	27 9-11 am Judo 1 pm Taichi

Hongwanji Radio Programs JULY 2013

**KZOO 1210 AM
Japanese Language
Saturday at 7:30 AM**

July 2013

6 Rev. Muneto
13 Rev. Hojo
20 Rev. Umitani
27 Rev. Okano

August 2013

3 Rev. Kawaji
10 Rev. Muneto
17 Rev. Hojo
24 Rev. M. Nishiyama
31 Rev. Hashimoto

Betsuin Services

Adult English Services

10am Services

Schedule of Speakers
not available in time
for Goji. Please call the
office for more
information.

Dharma School is on
Vacation until August

Nursing Home Services

July 4 – Hale Nani & Hale Ho Aloha
(Cancelled)
July 11 – Maluhia (Rev. Sumikawa)
Liliha (Rev. Kaufmann)
July 12 – Kuakini (Rev. Hojo)
July 25 – Nuuanu (Rev. Hojo)
July 26 – Leahi (Rev. Muneto)

August visit schedule not
available at time Goji went to
print. Please call the office
for more information.

In Memoriam



April 2013

The Hawai'i Betsuin extends its deepest sympathies to the families of the following members who passed away recently. JULY the family members find solace and comfort in the Nembutsu. Namo Amida Butsu

- | | |
|---|-------------------------------------|
| 1 MATSUURA, Haru (77) | 16 ISHII, Katsuichi "Jack" (101) |
| 1 OKINO, Glenn Michio (67) | 16 OYAMA, Howard Tadao (64) |
| 1 YAMAMURA, Georgine Sumiye (86) | 20 YAMAMOTO, Jane Michiko (68) |
| 4 MURANAKA, Hiroshi (96) | 21 FURUTA, Ruth Shizue (95) |
| 4 SAMORI, Betty Harue (95) | 21 SAKAHARA, Sueko (90) |
| 6 WATANABE, Alice Toshie Matsunaga (92) | 28 MORIMOTO, Kennard Kuniyoshi (97) |
| 9 MAEDA, Fumie (86) | 29 EGAMI, Iseko "Margaret" (93) |
| 12 MIYAMOTO, Gladys Michie (86) | 29 FUKUMOTO, Richard Takashi (83) |

2013 Memorial Service Schedule

2013 is the memorial year for those who passed away in:

2012 – 1 year	2001 – 13 year	1981 – 33 year
2011 – 3 year	1997 – 17 year	1964 – 50 year
2007 – 7 year	1989 – 25 year	1914 – 100 year

Mini Market

Aug. 4th



Reminder:
No Goji
for August 2013!



南
无
阿
弥
陀
佛

The great practice is to say the Name of the Tathagata of unhindered light. This practice, comprehensively encompassing all practices, is perfect and most rapid in bringing them to fullness. For this reason, it is called "great practice." Saying the Name then breaks through all the ignorance of sentient beings and readily brings all their aspirations to fulfillment. Saying the Name is in itself mindfulness; mindfulness is nembutsu; nembutsu is Namo-amida-butsu.

- Shinran Shonin