



1727 Pali Highway
Honolulu, Hawaii 96813

GOJI

Vol. 70, No.4
APRIL 2015



NEWSLETTER
of the
Honpa Hongwanji
Hawaii Betsuin
www.hawaiibetsuin.org

2015 Slogan:
Embrace Change:
Awareness:
(Seek Opportunities)

BETSUIN
MINISTERS
Chief Minister
Rev. Tatsuo Muneto
Asst. Chief Minister
Rev. Toyokazu Hagio

Ministerial Staff
Rev. Yuika Hasebe
Rev. Arthur Kaufmann
Rev. Satoshi Tomioka

Happy Buddha Day!!

Services Scheduled for April 5th and April 12th

Hawaii Buddhist Council will observe Buddha Day
April 5, 2015 at 9:00 AM at Soto Mission: Speaker will be Dr. Jay Sakashita

Honpa Hongwanji Hawaii Betsuin will observe Buddha Day
April 12, 2015 at 9:30 AM: Speaker will be Dr. Dexter Mar

Do you know what Buddha Day is? We sometimes call the day Hanamatsuri, Kanbutsu-E, or Flower Festival. Buddha Day is the day the founder of Buddhism, Sakyamuni Buddha, was born. It is said that Sakyamuni Buddha was born in India (now Nepal) on April 8. It is said that as the day of his birth neared, his mother Queen Maya, as was the custom at the time, left the palace to return to her mother's home for birth. On the way, she stopped to rest in Lumbini Garden. There were beautiful Ashoka blossoms all about, and as she reached out her arm to pluck a branch, the beautiful Prince was born. He was the future Sakyamuni Buddha. There are many flowery descriptions of his birth, which includes celestial birds singing beautiful songs and beautiful flowers and a sweet gentle rain bathing the baby prince.



Each year, we decorate the Hanamido (Flower Shrine) with flowers and pour over the baby Buddha statue, sweet tea which symbolizes sweet rain from the heavens above. Together with the schools and traditions of all existing Buddhism, we celebrate this wonderful day. On this joyful occasion of Hanamatsuri, let us gather at Soto Mission and Hawaii Betsuin to observe Buddha's birthday.

Announcing Betsuin Dharma Discussion (2)
Topic: "Source of Wisdom for Modern Living"
Six discussion sessions in the month of May 2015 on
"Finding the Essential: How to live a life true for yourself"

Rev. Shigenori Makino will explore such major topics of
Shoshinge as Single Mindedness, Pure Aspiration
and True Entrusting.

The sessions will be held on Fridays, May 1, 8, 15, 22 and 29,
2015, 7:00-8:30 pm at Annex Temple. For more information,
contact Rev. Tatsuo Muneto, Rimban (536-7044) or
Alan Goto, Buddhist Education Chair (531-6429).

Rimban's Column: "Why Do We Honor Lady Eshinni?"

Rev. Tatsuo Muneto



The Hawaii Betsuin BWA cordially invites members and friends of the temple to attend the annual Eshinni-Kakushinni

Day Service on Sunday, April 26, 2015 at 9:30 am. The speaker each year touches upon the life and legacy of Shinran Shonin's wife, Eshinni, and his youngest child, Kakushinni.

This year's speaker will be the Reverend Yuika Hasebe. The Dharma school students, parents, and teach-

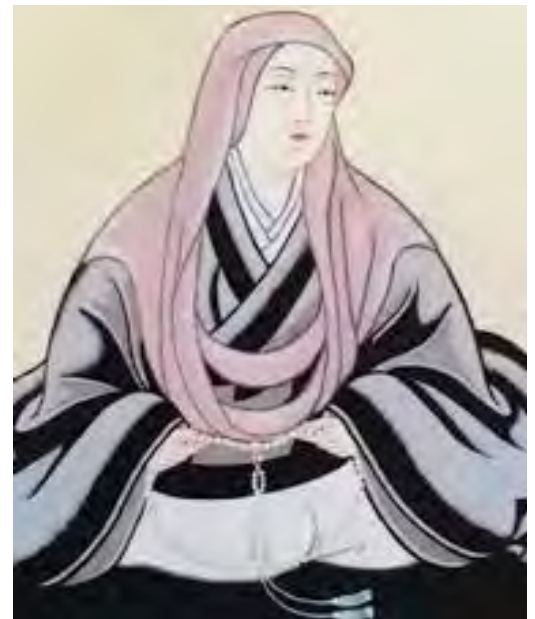
ers are planning for this service and will sing a few songs to promote peace.

Why do we honor Eshinni? The reason is that she devoted her life to Shinran Shonin's work of spreading the Nembutsu teaching. For leaders to achieve their goals, the warm understanding and constant support of their spouses are needed. This applied to the case of Shinran Shonin (1173-1263) more than 800 years ago. After being exiled to Echigo, which is in northern Japan, at the age of 35, Shinran chose to lead an ordinary life with his wife Eshinni (1182-1271?). While raising a family, Shinran had his mission to achieve, which was to further study the Nembutsu teaching that was taught by Honen Shonin and to prove that having faith (Entrusting Heart) in Amida's vow and saying the Nembutsu were the only ways to achieve enlightenment in the Last Dharma Age (Mappo).

Eshinni understood and agreed with Shinran's religious commitment. She, too, wanted to achieve the Buddha's path of freedom as a woman. Blessed with several children, Eshinni accompanied Shinran as he moved to the Kanto area, where they stayed for about 20 years. It is said that Shinran Shonin completed writing his magnum opus *Kyogoyshinsho* at that time. It was due to Eshinni's strong support and understanding of her husband's commitment that Shinran Shonin was able to prove that the Nembutsu teaching was the ultimate form of Mahayana Buddhism.

Kakushinni (1224-1283) also understood Shinran's effort to spread the Nembutsu teaching. When Shinran Shonin passed away in Kyoto, Kakushinni was at his death bed to take care of her father who was going to return to the Pure Land. After her father's body was cremated in Higashiyama, Kyoto, she was assigned to take care of the grave erected there.

That mausoleum became the origin of the Hongwanji. For this reason, Kakushinni is considered to be the mother of the Shin Buddhist Women's movement. We owe so much to these two outstanding Buddhist women. The significant role of Buddhist women in Jodo Shin Buddhism must be remembered by all. The Buddhist Women's Association movement in Hawaii is vital to the temples and needs to continue to be spirited and strong. Let us join together for Eshinni and Kakushinni Day Service on April 26, 2015.



The Lady Eshinni, Wife of Shinran Shonin



GOJI

The **GOJI** is a monthly publication of the Honpa Hongwanji Hawaii Betsuin, Tel. (808) 536-7044.. There is no newsletter published for the month of August.

DEADLINE:

Articles must be submitted no later than the 15th of the month prior to publication. Mail (1727 Pali Hwy, Honolulu, HI, 96813), fax (536-0919), or e-mail (hibetsuin@hawaii.rr.com) all items to the **GOJI**. Please include your name and contact information. Original images should be labeled on the reverse side with caption and return information.

GOJI STAFF:

Editorial: *Jo desMarets; Dianne Ida, Randy Kawamoto, Ralston Nagata, Rev. Satoshi Tomioka, Japanese section editor*, Production: *Stacy Bradshaw, Alice Omura, Alice Tando, Kimiyo Miyose*; Circulation: *Stacy Bradshaw*; Contributing reporters from *Hongwanji Mission School, Buddhist Women's Association, Dharma School & Parents, Project Dana, Wednesday Gang and Gals, Boy Scouts, Girl Scouts, Pacific Buddhist Academy, and the Kyodan*

The opinions expressed by individual contributors are their own and do not necessarily reflect those of the Honpa Hongwanji Hawaii Betsuin.

Important Notice: We Must Be Safe!

For many of us who consider the temple our second home and come for services, classes, events, or maybe just for fellowship, it is hard to imagine the temple to be an unsafe place. However, the business office staff and Ministers learned that recently, there were some incidences after the Sunday Services of strangers wandering around the temple premises. Fortunately, nothing was taken, and there was no real trouble to report. To keep a safe environment, the Business office staff and the Ministers are taking a proactive stance by making the following changes to our Sunday procedures:

- All room keys will need to be signed out with the office staff, even for short use. Please note that if you are unlocking a room for any purpose, you are also responsible for locking up the room after its use.
- All members and volunteers must minimize the use of the Business and Minister's office as an access point to the social hall.
- Do not unlock any doors leading up to the Business office.

Another big change is that on a "regular" Sunday, meaning when there are no other activities scheduled after the 10:00 service, the Ministers will be locking up the social hall at 12:15 pm. We realize that many of you remain in the social hall to wait for the 1:00 pm Japanese service. To accommodate these members, the Ministers will be opening the Annex Temple at 12:30 pm on these Sundays.

The Ministers and Staff humbly asks our temple members and affiliates to please be aware of strangers and dangers and report anything suspicious to the office.

Please also be aware of your personal belongings when you are at the temple. DO NOT leave them unattended!

We know that these new procedures may be inconvenient, but we ask for your cooperation and compliance for the safety and betterment of the temple, its members, and staff. If you have any other suggestions on how we can improve security around the temple, please don't hesitate to inform the office or Ministers.

Thank you for your kokua.

Think
SAFE
Act
SAFE
BE
SAFE

**BWA
Mini
Market**



**Mark your calendar!
May 3rd**

Betsuin BWA News

Fujiko Motobu

SUMIE EXHIBIT AT CITY HALL: APRIL 20 - MAY 1

The 13th annual Sumie exhibit will be held at the city hall from April 20 through May 1. Students of Mrs. Sachie Saigusa, our Betsuin and BWA member, wife of the late Rev. Saigusa, will be exhibiting their art work again this year. Students from Hawaii Betsuin, Moillili Community School, Makua Alii Center, Wahiawa Community School, and students from Hilo Hongwanji will be presented.

Sumie is a special kind of art work, highly disciplined to perfection and all the art pieces are very beautifully done. Eight of our Betsuin BWA members will be exhibiting their beautiful art work. They are Marjorie Determan, Lillian Inatsuka, Mihoko Ishida, Lillian Kadomoto, Hisako Koga, Fujiko Motobu, Doris Nishizawa, and Linda Toshima.

Everyone is invited to this free exhibition, so please make an effort and enjoy some nice, peaceful, relaxing art work which were done by your friends.

ESHINNI / KAKKUSHINNI SAMA SERVICE APRIL 26 AT 9:30 AM

This is a very special service because the Dharma School members, the youth and children, will be taking the leadership in conducting the service together with the BWA members. Hawaii Betsuin's one and only woman minister, the Rev. Hasebe will be the speaker, for Eshinni sama and Kakkushini sama were both women. Eshinni sama was the wife of Shinran Shonin, and Kakkushini sama was their youngest daughter, who took care of Shinran Shonin until he passed away.

EVENTS FOR APRIL 2015

Date	Time	Activity
Sat. April 04:	7:00 am	Tray favors preparation
Sat. April 11:	10:00 am	BWA Executive Bd. meeting in diningroom
Sun. April 12:	9:30 am	Hanamatsuri service
Sun. April 19:	11:00 am	General Membership Mtg. #2, in Hondo
Sun. April 26:	9:30 am	Eshinni Kakushinni Day Service

Please make all effort to attend this memorable service. Not only the speaker, but the participation and leadership displayed by the Dharma School students and parents make this a very special service.

This day is also the last day that Dana Day Collections are being made, so we will welcome all Dana contributions.

HUMOR, ANYONE? A

Chihuahua, a German shepherd,

and a bulldog are sitting in a park when an attractive collie comes along. The collie tells them that the one who constructs the best sentence using the words "liver" and "cheese" can take her out. "I love liver and cheese," says the German shepherd. The collie is not impressed. "I hate liver and cheese," says the bulldog. The collie doesn't think this is very good either. Finally, the Chihuahua says, "Liver alone. Cheese mine." And so the Chihuahua and the collie went on a date.

HEALTH NEWS: Have you heard of the ancient Okinawan miracle called "hara hachi bu...." ? If you are lucky enough to be invited to an Okinawan family for dinner, you may hear the family elder speak of "hara hachi bu" before the meal. You may think, what is this? Is it a prayer for the gods to remove all the fat from the food? This isn't it. It is a gentle reminder to do one simple thing for dinner. You should leave 1/8 of the food in your plate untouched. You are not to gobble up and clean up your plate of all the food. By eating only 7/8 of the food this will eliminate 20% of the calories. If you were to do this for every meal, perhaps you will lose some weight and be healthier. Shall we try? Remember, hara hachi bu.

RECIPE FOR THE MONTH: NAMASU SAUCE

from June Iwahashi

1 cup Mitsukan su (vinegar), 1 cup sugar, 1 tablespoon table salt: mix and bring to a boil and cool. When making

namasu with chayote, the important thing is to soak the chopped chayote in water to get rid of the "aku" and rinse a few times, and drain well.

Ingredients: daikon or chayote, cucumber, carrots, round onion, fresh ginger, Korean seaweed. Slice, chop, to your liking and mix with the sauce and you will enjoy it. Try it.

Have you met Colleen? You'll Find Her in the Office!

Our newest member of the Betsuin office ohana has already been with us for six months now. May I introduce Mrs. Colleen Kunishige. Colleen has much experience in customer service and office management and is knowledgeable in Jodo Shinshu Buddhism and Hongwanji traditions.

Born and raised in Hilo, Hawaii, she graduated from Waiakea High School and University of Hawaii Hilo. Although her original interest was in art and graphic design, she ended up graduating in Sales and Marketing and Business Administration, a more "practical" major in her dad's opinion, and which has served her well thus far. She is the eldest of two daughters. Her parents are Hilo Betsuin members, Takao and Elaine Shikuma,

who still reside in Hilo with her younger sister, Lori. After moving to Honolulu in 1986, Colleen married Russ Kunishige (also from Hilo, mother, Yaeko Kunishige, active Hilo Betsuin Member) in 1990 at Hilo Betsuin with Rev. Daian (now Jeffrey) Soga as the officiant. Colleen boasts that she is the one who taught Rev. Soga English after he first arrived at Hilo Betsuin.

Colleen currently resides with her family in Waialeale and has two daughters, Lauren (23) and Kristin (21) and two dogs, Kolohe and Brittles. When not working hard for the Hawaii Betsuin six days a week, she helps out with Hongwanji Mission School and temple fundraising at the Stan Sheriff Center,

watches criminal dramas on TV, shops with her girls, and on the rare occasions does arts and crafts. She is also our in-house home remedy guru and has a plethora of information on various topics, based on her experiences or on what she reads, sees or hears from other people.



If you have already met or talked to Colleen on the phone, I am sure that you will agree that she is a great addition to the office, and if you have not already met her come in and introduce yourself. Please welcome our semi-new office manager, Colleen Kunishige.

News From the Dharma School

Debbie Kubota

Funga Alafia, Ashe` Ashe` ... Honolulu Dharma Schools—Playful Percussion

Ever wonder what a boomwhacker is? On Sunday, February 22, students and families from the Betsuin, Jikoen and Moiliili got to experience playing boomwhackers first hand, along with rhythmical clapping, echo singing, and egg shakers. What a treat it was to have this exciting and interactive session conducted by Michael Wall, who is part of the Department of Education's Artists in the Schools program. First, Michael taught the group rhythmical singing and clapping patterns (funga alafia, ashe`, ashe`...), then he said, "Echo me now." Next, he led the group in icebreaker activities that

involved dividing into small groups with each person introducing themselves by clapping a rhythmical pattern to match their name and



telling the group about something that was important to them. That was just a warm-up. After mov-

ing the chairs into a large circle, everyone got to choose a colored boomwhacker or egg shaker, and the groups were divided by the colors

of these instruments. Each group was taught a specific pattern to play, and we were all put to the test as Michael pointed to each group in various sequences, asking us to play our patterns. Some of our younger students volunteered to lead the groups in their boomwhacker / egg shaker playing patterns. Our session culminated with delicious treats provided by

the Honolulu Dharma School families. What a wonderful session, which was thoroughly enjoyed by all!

Betsuin Girl Scouts Breakfast Fundraiser

by Betsuin Girl Scouts, Alexandrianna Harman and Cody Lopez



On March 15, 2015 the Betsuin Girl Scouts served a homemade breakfast of eggs, smokies sausages, fruits, miso soup, and banana, chocolate chip, and regular pancakes. We would like to thank the temple members, family and friends who came and supported us at our Breakfast Fundraiser. Your generous donations will be going towards our cultural and educational trip to Japan in the Summer of 2015.



We would also like to thank the parents for helping us prepare the breakfast and extend our deepest appreciation to the temple for allowing us to use the facilities to cook our meal. Without everyone's help and generosity, the fundraiser wouldn't have been as successful as it was; we raised a total \$1,700.00!



Pre-Tokudo Training to be held June-December, 2015

The Bishop's office announced that the sessions for the Pre-Tokudo Training, at temple level, will be held from June to December of this year. The ten-day Tokudo program and ceremony for overseas district candidates will be held early next year in Kyoto.

The Pre-Tokudo program is held for those who are interested in becoming full-fledged ministers of Honpa Hongwanji Mission of Hawaii. The term, Tokudo signifies ordination. This is the first step to become a minister of Jodo Shinshu. Those who are interested in this program can contact Rimban Tatsuo Muneto (tmuneto@gmail.com) for more information on qualifications for applicants and financial assistance for Tokudo sessions at Honzan.

The candidates for this program will go through local temple training with temple ministers to study the liturgies, history and teachings of Buddhism and Jodo Shin from the middle of June to early December of this year. The state level training sessions will be held in the middle of December at the Buddhist Study Center.



BOY SCOUT TROOP 49

Arrow of Light Ceremony

Douglas Yanagihara, Troop 49 Boy Scout

On Saturday, February 21, 2015, the Kapiolani Chapter of the Order of the Arrow performed an Arrow of Light Ceremony for Cub Scout Pack 49. The Arrow of Light Award is the highest rank in Cub Scouting. Earning this rank, which prepares a Webelos Cub Scout to become a Boy Scout, were four Cub Scouts: Jared Furuta, Dylan Ikehara, Christopher Lee and Noah Zane. The Arrow of Light badge is the only Cub Scout badge that can be worn on the Boy Scout uniform when a boy graduates from Cub Scouts to Boy Scouts.



Pack 49 Cub Scouts Bridging Ceremony



a turk's head knot which serves a dual purpose. It is not only a slide to hold the neckerchief in place, but during an emergency situation, it can be used as a rope and be converted to a rescue/first aid cord, as needed. After the ceremony, the older Boy Scouts proceeded to take the new Boy Scouts from the Social Hall to the Troop 49 meeting. The six new Boy Scouts will make up the Badger Patrol. Congratulations and welcome, new Badgers to Troop 49!

Cub Scouts who bridged over to Troop 49 as Boy Scouts are Christopher Lee, Kai Iwamura, Dylan Ikehara, Sean Furuta, Jordan Furuta, and Noah Zane. During the Pack 49 Bridging Over dinner, CubMaster Jason Furuta was honored for his years of service to the Pack.

On Friday, February 27, 2015, a group of six Pack 49 Cub Scouts "bridged over" to Troop 49. The "bridge" is a symbolic connection that represents the transitioning of Cub Scouts to Boy Scouts. The Cub Scouts carry over the skills and knowledge acquired in their years with Pack 49 and go across the "bridge" to their new venture with the Boy Scouts. After crossing over, Troop 49 Boy Scouts conferred each new Scout, replacing the Cub Scout Webelos plaid neckerchief with the Honpa Hongwanji Betsuin Boy Scout purple neckerchief with wisteria mon imprint and a new white neckerchief slide. The Troop 49 neckerchief slide is made out of white rope in the form of



**Hongwanji
Radio Programs
APRIL 2015
KZOO 1210 AM
Japanese Language
Saturday at 7:30 AM**

- 04 Rev. Toyokazu Hagio
11 Rev. Satoshi Tomioka
18 Rev. Yuika Hasebe
25 Rev. Kosho Yagi

Betsuin Services

8 am Asaji Service

- 5 HBC Buddha Day Service
at Soto Mission
12 Rev. Satoshi Tomioka
19 Rev. Tatsuo Muneto
26 Rev. Toyokazu Hagio

**Adult English Services
10:00 AM**

April 5th at 9:00 AM
HBC Buddha Day
at Soto Mission
Speaker: Jay Sakashita

- 12 Betsuin Buddha Day:
Combined service 9:30 am
Speaker: Dexter Mar
19 Rev. Arthur Kaufmann
26 Eshinni & Kakushinni Day:
Combined service 9:30 am
Rev. Yuika Hasebe

**Dharma School
Service 9 AM**

- 05 HBC Buddha Day
at Soto Mission
Speaker: Jay Sakashita
12 Betsuin Buddha Day:
Combined service 9:30 am
Speaker: Dexter Mar
19 Dharma School Teacher
26 Eshinni & Kakushinni Day:
Combined service 9:30 am
Rev. Yuika Hasebe

In Memoriam



FEBRUARY 2015

The Hawai'i Betsuin extends its deepest sympathy to the families of the following members who recently passed away. May the family members find solace and comfort in the Nembutsu.
Namo Amida Butsu

12/19/2014 ODO, Amy Tomie (85)

1/3/2015 HIKICHI, Edna Yukiko (97)

- | | |
|---------------------------------|-----------------------------------|
| 1 MARUYAMA, Richard Toshio (88) | 15 FUJIKANE, Fred Shigeru (93) |
| 2 KUNISHIGE, Stanley Seiji (74) | 16 OTO, Harold Katsushi (82) |
| 3 TAKIMOTO, Naoaki (89) | 17 MAEKAWA, Keith Minoru (82) |
| 4 YAMANE, Doris Tomu (91) | 17 TAGAMI, Edna Yachiyo (84) |
| 6 NOMURA, Patty Kimiko (89) | 18 ICHIMURA, Joyce Mutsuko (76) |
| 7 LANGE, Evelyn K (85) | 19 NISHIMURA, Rose Etsuko (86) |
| 9 KAWACHIKA, Keiko Julie (88) | 24 KINOSHITA, Yaeno "Louise" (94) |
| 10 HIROSE, Glenn Shozo (87) | 25 NAKAMOTO, Theodore Osamu (82) |
| 10 NOZAWA, Hideo (88) | 25 SATO, Ann Tsuyuko (78) |
| 12 OKI, Stanley Kazuyoshi (71) | 26 TANI, Grace Chikako (84) |
| 13 TSUDA, Dorothy (94) | 27 YOUNG, Evelyn Eiko (73) |

2015 Memorial Service Schedule

2015 is the memorial year for those who passed away in:

2014 – 1 year	2003 – 13 year	1983 – 33 year
2013 – 3 year	1999 – 17 year	1966 – 50 year
2009 – 7 year	1991 – 25 year	1916 – 100 year

Nursing Home Services

- 02 Hale Nani – Rev. Hagio
Hale Ho Aloha – Rev. Muneto
09 Maluhia – Rev. Hasebe
Liliha – Rev. Kaufmann
10 Hale Pulama Mau – Rev. Hasebe
23 Nuuanu Hale – Rev. Kaufmann
24 Leahi – Rev. Tomioka



The great practice is to say the Name of the Tathagata of unhindered light. This practice, comprehensively encompassing all practices, is perfect and most rapid in bringing them to fullness. For this reason, it is called "great practice." Saying the Name then breaks through all the ignorance of sentient beings and readily brings all their aspirations to fulfillment. Saying the Name is in itself mindfulness; mindfulness is nembutsu; nembutsu is Namo-amida-but-su.

-Shinran Shonin