



1727 Pali Highway
Honolulu, Hawaii 96813

GOJI

Vol. 76 No. 07



JULY 2021
NEWSLETTER
of the
Honpa Hongwanji
Hawaii Betsuin
hawaiibetsuin.org

2021 Slogan:
Building
Healthy Sanghas:
Nurturing Empathy
and Respect

BETSUIN
MINISTERS

Chief Minister
Rev. Toyokazu Hagio

Ministerial Staff
Rev. Yuika Hasebe
Rev. Sol Kalu
Rev. Shingo Furusawa



In Person and Zoom Obon Services Scheduled for July 4th Limited Seating; Reservations Required

Speaker will be Rev. Koho Takata of the
West Los Angeles Buddhist Temple

You are invited to the 2021 Hawaii Betsuin Obon Service and Talk Story. Time flies so fast. With the coming of July, the first half of this year 2021 has already passed. We tend to regret what we did in the past and to worry about what will happen in the future. However, the "Homages" states, "Hard it is to be born into human life; NOW we are living in it. Difficult it is to hear the Teachings of the Blessed One; NOW we hear them." Buddhism teaches us that now is the most important. Also, Shinran Shonin, the founder of Shin Buddhism tells us that Amida Buddha always embraces us all. In other words, the Buddha's compassion is reaching out to us right here and right now. This year, we are fortunate to have Rev. Koho Takata of West Los Angeles Buddhist Temple as our Obon speaker.

The Obon service schedule is as follows:

8:00AM Japanese (Zoom & In person)

10:00AM English (Zoom & In person)

1:00PM Japanese (Zoom & In person)

If you would like to join any of the services, please make a reservation at 808-536-7044.

July 3, 2021 Talk Story with Rev. Koho Takata:

Time: 9AM-11AM

Speaker: Rev. Koho Takata

Topic: "Live a Life of Shinjin and Nembutsu"

If you would like to join the talk story, please register via the link
<https://forms.gle/1uZymxwasFfpgDCf7>

Let us treasure each moment of our lives and listen to the teachings of Amida Buddha NOW! In Gassho.



Dharma Message: "Time Goes On" Rev. Sol Kalu

We enter the summer of 2021 with renewed hope that the light at the end of the dark tunnel of the COVID-19 pandemic, which has ravaged the world since late 2019 and changed many people's lives, is closer with the active immunization programs going on throughout the whole country and the development of herd immunity as a result.

Despite the hardships, suffering, and despair that the ongoing world events have brought to human existence, the resilience of the human spirit to endure the harshest of adversities has prevailed. Heedless of some silly predictions by some doomsayers

that the pandemic heralded the beginning of the end of human existence, the world did not end. What really ended were just the events of the past, and linear time continued on its one-way course. One-way means it doesn't and can't travel backwards.



Things and events follow this natural course in a cycle: living beings are born, grow old, and die, and new life forms are created. Causes and conditions bring about new events both good and bad to continue the cycle. Things that have happened in the past cannot be undone. Nothing, for example, can restore the lives of those who succumbed to the coronavirus, nor can we revert to the life that we knew prior to the pandemic.

The great drama of life is not like a VHS or DVD movie that can be rewound or reversed; there is no reset button either. That being the case, the Buddha always taught that human life is precious and should not be lived in vain. It is very difficult to be born as a human being, and only humans have the capability to achieve

Dial-A-Dharma Message

(Recorded message)

English
(808-536-2456)

Japanese
(808-354-0261)



enlightenment. Therefore, this present moment, this life we are living now, is our only chance at connecting to that timeless, ultimate reality, the realm of Nirvana or the Pure Land in our Jodo Shinshu tradition.

Let us all continue to face the challenges ahead as the year 2021 courses on, with renewed faith, hope, and energy to learn and apply the teachings in our daily lives. We survived the struggles of the past year, and we will again make it through the coming years, as we are all within the embrace of the boundless wisdom and compassion of Amida Buddha. Namo Amida Butsu!



GOJI

The **GOJI** is a monthly publication of the Honpa Hongwanji Hawaii Betsuin, Tel. (808) 536-7044. There is no newsletter published for the month of August.

DEADLINE:

Articles must be submitted no later than the 10th of the month prior to publication by e-mail (execdir@hawaii.betsuin.org), mail (1727 Pali Hwy, Honolulu, HI, 96813) or fax (536-0919). Address submissions to the **GOJI**. Please include your name and contact information. Original images should be labeled on the reverse side with caption and return information.

GOJI STAFF:

Editorial: *Jo desMarets; Dianne Ida, Randy Kawamoto, Rev. Yuika Hasebe, Japanese section editor* Production: *Stacy Bradshaw, Colleen Kunishige*; Circulation: *Stacy Bradshaw*; Contributing reporters from *Hongwanji Mission School, Buddhist Women's Association, Dharma School & Parents, Project Dana, Wednesday Gang and Gals, Green Team, Boy Scouts, Girl Scouts, Pacific Buddhist Academy, Betsuin Board and Social concerns, and the Kyodan*

The opinions expressed by individual contributors are their own and do not necessarily reflect those of the Honpa Hongwanji Hawaii Betsuin.



Drive Thru Bon Dance Experience!

**Saturday,
August 28, 2021**

10:00 am to 4:00 pm

**See page 6 Up Coming Activities
for more information!**

President's Message from Dexter Mar



Luck or Science?

By Dexter Mar



Tsuno Daishi



Many spiritual traditions rely on appeasing vengeful spirits to end sickness.

In a recent NHK World TV report*, ancient religious practices to ward off epidemics was featured. Joint Shinto-Buddhist rites to appease the deity of plagues was revived after a 550-year hiatus. For over a thousand years, Kyoto people have believed plagues were caused by vengeful spirits and appeasing them would end the sickness. Current day festivals have their roots in these purification rites held to cleanse the city. Talisman of Tsuno Daishi (shown above) are obtained at Buddhist temples for display in homes to protect residents from illness.

*(<https://www3.nhk.or.jp/nhkworld/en/tv/corekyoto/20210603/2029145/>),

Another perspective recognizes the tremendous work of thousands of scientists, manufacturers, medical professionals, transport workers, doctors, pharmacists, nurses, and so many unheralded others, in getting COVID vaccines into our arms! The COVID vaccines are not divine miracles but testaments to brilliant scientists and 24/7 efforts by the medical community. Not luck but hard work. Kyoto is in a state of emergency today, Honolulu is re-opening, safely.

Which “talisman” above do you think offers more protection against the COVID plague?

We are beginning to bounce back from the COVID plague with the community re-opening and Hawaii Betsuin opening our doors a bit wider each day. As of the time of writing this message, Hawaii is 54% vaccinated with a goal of 70% by July 4. Hopefully, as you read this, we’ve reached 70%. Even if we’ve reached the 70% milestone, please encourage everyone you know to get vaccinated.

The COVID-19 virus is a dangerous and deadly plague that will continue to sicken those without immunity. **The UN-vaccinated become even more likely victims of this contagion.**

In Hawaii and the mainland, reliance on “good luck” and purification rituals (Shinran Shonin called these “sundry practices”) dangerously contribute to vaccination hesitancy. Through our Shin Buddhist view, let’s act in the wisdom of medical science and compassion for each other to get vaccinated and encourage others to do so too.

We can then all re-connect in person this Fall in joyous celebration of living our lives together on the Buddhist path. Hope to see you all again at the temple very soon! Namoamidabutsu!!

BWA News and Events

Fujiko Motobu

WHAT IS SADNESS?

All of you must have experienced sadness of some sort. Death of someone whom you had held very dear in your heart brings much sadness to a person. As one gets older, we experience sadness more frequently in losing someone we love dearly. On April 7, 2021, my dear beloved dog, Happi, drowned in the pool in my backyard. I believe that the seventeen year old Chihuahua-Pomeranian dog committed suicide because in human age he was equivalent to being about 102 years old. He used to swim three to six laps often, and he lived in the same home with the swimming pool all of his life. He was beginning to lose his vision and hearing as well as having difficulty in walking. He woke up from his nap around 8:00 pm and walked out of the house as he usually did. Before 9:00 pm I looked for him to get him into

bed for the night, and couldn't locate him. My daughter and I looked for him and she found him floating in the pool. It was too late to resuscitate him. Wrapped in a towel, he looked as though he was very comfortable and ready to sleep.

Happi passed away a day before April 8, Hanamatsuri. The very next day I took Happi to the vet's office and he was sent to be cremated. His ashes were returned a few days later in a tiny tin can, which is placed in a purple velveteen bag with the following inscriptions, "Until We Meet Again at The Rainbow Bridge." His ashes are placed by the Buddha at my altar. On April 23, 2021, I adopted a one-year-old Chihuahua-Pomeranian dog from the Humane Society. I named him PEPPI, since he is frisky and full of pep and



replaced HAPPI. I hope he will be an obedient and nice dog and will live a long life with me.

If losing a dog makes me so sad, losing a human being relative or a friend would certainly break a person's heart. My father passed away some forty plus years ago and my mother passed away over twenty years ago, but I still miss them greatly. I often have questions and I wish my mother were around to give me the answers to my questions. She was a very smart mother who read a lot. She came from Hiroshima, Japan and her home was near Miyajima where the tourists are visiting a lot these days. Her parents had acres of rice fields and her father was also a blacksmith. After World War II ended, General McArthur ordered the farmers with lots of land which was often being harvested by farmers who rented field spaces since they did not have their own land, to hand down the land to those who worked on the land. Thus, my grandfather lost acres of farm land. Not only death, but losing your land was indeed sad. Much tears were drained due to the war. When we live long there are many sad memories that linger on with us. Fortunately, we have Amida Buddha to be thankful for our daily lives.

NAMO AMIDA BUTSU.

More Happenings from the BWA

2021 Dana Awardees: Honolulu United BWA Dana Awardee for 2021 is Adult Friends for Youth. Continuing awardees for 2021 are Project Dana, Touch A Heart, Hawaii Foodbank, Homeless Outreach and Medical Education (H.O.M.E.). Thank you for your generous Dana Day donations.

Make Me Happi! Our BWA website team is working on a happi coat project to coincide with Bon season. Adult and keiki-size Happi Coats are for sale. Contact the BWA for details.



Postcard Project with Girl Scouts: We are collaborating with the Hongwanji Girl Scouts to write, decorate and deliver postcards to the care homes that our Betsuin ministers were visiting prior to the pandemic.

Save the Date: Honolulu United BWA Joint Membership/Education Conference, August 14, 2021, 8:00 a.m. – 12:30 p.m.

Reminder: 3rd General Membership Meeting, July 25, 2021 via Zoom.

BWA News and Events continued from page 4

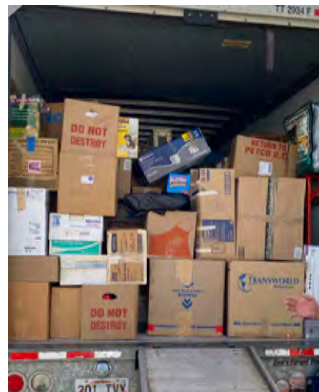
Sharing Is Caring!



From April 19th to the last week of the month, the BWA ladies and supporters sorted and bagged items donated for the 2020 Bazaar which was cancelled due to the pandemic. It took nearly two weeks for the volunteers to classify and sort the thousands of items being stored. It was decided that we would pass many of the items on to other groups who may be able to use them, especially the clothing. Items were bagged and delivered to the YWCA Dress for Success; towels and reusable tote bags were sent to the Hawaiian Human Society; clothing, shoes, rolling suitcases, and backpacks went to RYSE (provides services to homeless youth); and the Betsuin Girl Scouts delivered clothing items to the Waikiki Health Center Youth Outreach. After saving many bags and boxes of useful items for these groups, we still had hundreds of bags and boxes of donations that volunteers from the Kiwanis Clubs of Honolulu, Kaneohe and Alakai Young Professionals, and the United Jr. YBA of Honolulu loaded on to a truck and delivered to Savers. Proceeds from the items sent to Savers

will be given to the Betsuin.

We also donated aloha shirts to the Hawaiian Shirts for Deployed Soldiers based in North Carolina. This group sends aloha shirts to military personnel stationed overseas. Forty shirts were tagged and prepared then mailed to NC for distribution to the troops. Included with each shirt



was a mahalo card and personal note from one of our BWA members thanking the recipient of the shirt for their service. The BWA will continue to collect aloha shirts for this group so if you have any aloha shirts that you would like to donate, please contact Jo desMarets (email: purpleldy2@aol.com).

In the course of digging through the accumulated items of clothing, house wares, toys, shoes, bags, books, sports equipment, breakables and non breakables, etc., the BWA was able to identify "treasures" to sell at our planned Bon-tique, Pop-up sales, and online, virtual market. Among these "treasures", a very life-like item emerged that surprised the volunteers. It was a precious, life-size turtle (determined to be a model, not real, but looked real); he was given the name "Mr. Kamesan". It would have been "oshii" (wasteful) if Mr. Kamesan was given to Savers! It became Charlene Kihara's mission to find Mr. Kamesan an appropriate new home.

She contacted the Waikiki Aquarium and found out that the Aquarium was closed for tours due to the pandemic.* However, Chessa Caparros, a program manager for the Education Department returned

Charlene's call via email, and after emailing back and forth a few times, Ms. Caparros informed Charlene that the aquarium would be delighted to accept Mr. Kamesan.

On May 21st, Charlene delivered the life-like honu to the Waikiki Aquarium's education program. Mr. Kamesan will be displayed at his new home either in the gift shop or as part of the Education Department.

*The Waikiki Aquarium reopened on July 1, 2021 under new guidelines. Please check the Waikiki Aquarium's website for current information on visiting the aquarium.



Betsuin Updates

from the Executive Director, Stacy Bradshaw

Happy July everyone! With more people getting their COVID vaccinations every day and the city moving to Tier 4, the Hawaii Betsuin began implementing its plans to restart the in-person services. Beginning in June, we successfully held in-person Sunday Japanese morning and afternoon services as well as provided real time Zoom format 10 AM English services. Our next step is to add in-person 10 AM English services while still providing the real time Zoom format for those who prefer to continue viewing the service from home. We appreciate everyone's patience and understanding as we continue to move forward in our re-opening. Our families' health and safety are our main priority as we do our planning. Below are the current updates for the next couple of months.

July 2021

- Continue in-person 8 AM (Asaji) and 1 PM (Nicchu) Japanese services. (Limit 25 attendees – Must call the office to make reservations)
- Have in-person Bon major service (with real time Zoom coverage) with Rev. Koho Takata of West Los Angeles Buddhist Church. (Limit 50 attendees - Must call the office to make reservations)
- Begin In-person with real time Zoom coverage 10 AM English services. (Limit 50 attendees – Must call the office to make reservations)
- Begin In-person memorial services at the temple. (Limit 25 attendees.) Please make reservations through the office.
- Begin drop-in columbarium visits. No reservations needed though we will still continue to have temperature checks and keep a record of visitors.
- Have private Bon family services. No combined bon mairi services. Please make reservations through the office.
- Start memorial ribbon and lantern sponsorships. (Please see insert).
Lanterns will be displayed during July and August.

August 2021

- 23rd Annual Golf Tournament will be held on Thursday, August 12, 2021 at the Ala Wai Golf Course. Registration, donations and hole sponsorships will be received until July 31, 2021.
- Hawaii Betsuin Bon Dance drive-thru experience will be on Saturday, August 28, 2021 from 10 AM to 4 PM. We will be pre-selling bon dance bentos, family food boxes, andagi and bon dance memorabilia. More information will be available through our website and weekly email bulletins.
- There will be an August Goji newsletter that will contain all the current updates and information on all Betsuin activities and events. Stay tuned.

Please do not hesitate to contact the office if you have any questions!

Up Coming Activities at the Betsuin!

Hi Everyone!

Hope you all are doing well as we move through the pandemic!

The Betsuin Events Committee has some exciting news to share with all of you.

We will be having a **Drive Thru Bon Dance Experience**

on Saturday, August 28, 2021
from 10:00a.m.-4:00p.m.

This date and time has
been confirmed!

Here's a sneak peek of the tentative events that we will be having on
**at The Drive Thru Bon Dance
Experience:**

Performers from different Bon Dance Organizations; Selling of T-Shirts, Canvas Bags, Bon Dance Towels and Face Masks plus Delicious Bentos and Family Pack meals from Ige's and Guri Guri Ice Cream Sherbert. Many other fun and exciting things are being planned!

The Events Committee is also considering these future events:

Movie Night in July
Silent Auction in October
Sushi & Chicken Sale in November
Craft Fair in December.

The Boy Scouts and the Girl Scouts will be volunteering their time to help us out. More updates to follow.

With Gratitude,
Wendy Harman
Stacy Bradshaw
Co-Chairs, Events Committee

Dharma School News

Debbie Kubota

Virtual Betsuin Dharma School Services and Activities - Sundays at 9 am

We finished out our 2020-2021 Dharma School year with fun services and activities. We commemorated Gotan-E on May 16, with Reverend Toshiyuki Umitani of Moilili Hongwanji as our guest speaker. In his Dharma Message, he talked about the movie "Home Alone," and related the concepts to Shinran Shonin teaching us that true happiness lies in living and understanding the truth of interdependence.



Interdependence means that our lives are intertwined with others who help us by providing care, compassion, support and sacrifices. Our Dharma School activity was Shinran-O (bingo game) in which we learned facts about Shinran's life.

On May 23, Mililani Hongwanji and Hilo Betsuin joined us for our service/activity to recap our Pen Pal Project. Reverend David Fujimoto shared a Dharma Message which featured the Dr. Seuss book — "Oh, The Places You'll Go!" Our Dharma School students shared their experiences having a pen pal from another temple. It was fun to hear what they learned about their pen pals, such as information about their families, pets, sports/musical instruments played, favorite foods/colors. It was so fun to hear that some pen pals who were randomly matched by age had some previous connections such as classmates at Hongwanji Mission School, or their parents knew each other (college classmates). We encouraged all of the students to stay connected with their pen pals and hope that they will be able to meet each other and enjoy times together as they grow older, at YESS Camp or Jr. YBA gatherings.

For our final Dharma School Service of the year, on May 30, Alan Kubota was our speaker for this Memorial Day observance, sharing a video of a taiko drum piece, Kokoro- Spirit of the Heart, that he composed in honor of his Dad and the 442nd Regimental Combat Team, which was brought to life by his cousin's Japanese dance troupe in SoCA. For our activity, our students and families took a

Kahoot! quiz with questions about what we did and learned over the year, such as which special service did we bring photos of our ancestors/families (Eitaikyo); who did we make Valentine's Day cards for (the ministers); true or false, is interrupting when someone is talking to you a way of showing respect (false); for what special service did we build card houses to learn about balance (Spring Higan). In closing, we watched a video with screenshots from all of our virtual services and activities through the year. What a great way to revisit and remember all that we did!

Although the pandemic prevented us from meeting in person, we

sure did not let that stop us from having fun this year. Opportunities were many, as we connected with our Dharma friends on the mainland, across Oahu and across the islands, something we couldn't do very easily if we were meeting in person. We are taking a break for the summer, but will be having two virtual sessions so we can stay connected, Sundays June 27 and July 25 to play games and watch videos together. Then, if all goes as planned, we look forward to getting together in person for Registration Day at Hongwanji Mission School on August 29, with fun activities to be planned.

No matter what your age, our services are open to all generations from across our islands and the mainland. Please contact our Betsuin office if you are interested. We hope to see you in person or online with us very soon!



Radio Programs JULY 2021

KZOO 1210 AM
Japanese Language
Saturday at 7:30 AM

03 Rev. Koho Takata
10 Rev. Shingo Furusawa
17 Rev. Hiromi Kawaji
24 Rimban Toyokazu Hagio
31 Rev. Kojun Hashimoto

NOTICE:

The Betsuin is now
scheduling in person
funerals and memorial
services with a limit
of 25 attendees.

Other options
are available.

Please call the office
at 536-7044 for
more information.

The 10 am English service,
and the 8:00 am and 1:00 pm
Japanese Sunday services
are now in person, with limited
attendance, and via Zoom.
Reservations are required for
in person services. Call the
office to reserve a seat for the
service.

Please contact the Betsuin
office at 536-7044 for more
information or see the Betsuin
Bulletin, sent out via email on
Fridays, to get the Zoom link
or call the office at 536-7044.
The Zoom service will also be
available on YouTube soon
after the service ends.

In Memoriam



MAY 2021

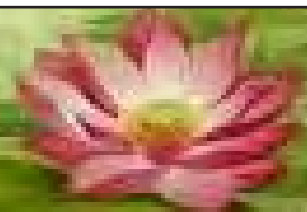
The Hawai'i Betsuin extends its deepest sympathy to the families of the following members who recently passed away. May the family members and friends find solace and comfort in the Nembutsu. Namo Amida Butsu

03/13/2020	FUJITANI, Tomiko Kitahata (96)
04/08/2020	OKADA, Yoshino (98)
05/03/2020	MATSUMIYA, Kenneth Yoshio (80)
06/23/2020	YONESHIGE, Joanne Naomi Koga (64)
08/11/2020	NOJIMA, Harry Yasuhiko (93)
09/04/2020	TOMITA, Melvin Mitsuo (87)
09/08/2020	MASAKI, Jan Setsu (90)
10/29/2020	YONESHIGE, Florence Tomiko (95)
01/27/2021	BRENNAN, Barry Michael (76)
03/26/2021	MATSUMOTO, Evelyn Emiko (91)
04/19/2021	YOSHINO, Dora Sadako (104)

MAY 2021

01 MATSUKADO, Edes Masaaki (82)	17 FUJITANI, Yoshiaki (97)
03 ABE, Doris Setsuko (94)	18 KINOSHITA, Jane Setsuko (95)
10 MURASHIGE, Chizuko (92)	21 UCHIMURA, Neal Kalani (74)
10 OMURO, Helen Natsue (92)	22 NEKOBA, Atsushi (93)
12 FUKUMOTO, Mildred Keiko (84)	24 ITO, Amy Mikiko (86)
14 FURUNO, George Taizo (96)	29 MIYAMOTO, Yoriko (104)
14 OKIMOTO, Sadako (94)	

**Nursing Home Services
are cancelled until
further notice.**



2021 Memorial Service Schedule

2021 is the memorial year for those who passed away in:

2020: 1st year	2009: 13th year	1989: 33th year
2019: 3rd year	2005: 17th year	1972: 50th year
2015: 7th year	1997: 25th year	1922: 100th year



The great practice is to say the Name of the Tathagata of un-hindered light. This practice, comprehensively encompassing all practices, is perfect and most rapid in bringing them to fullness. For this reason, it is called "great practice." Saying the Name then breaks through all the ignorance of sentient beings and readily brings all their aspirations to fulfillment. Saying the Name is in itself mindfulness; mindfulness is nembutsu; nembutsu is Namo-amida-butsu.

-Shinran Shonin