



1727 Pali Highway  
Honolulu, Hawaii 96813

# GOJI

Vol. 76 No. 08



AUGUST 2021  
NEWSLETTER

of the

Honpa Hongwanji

Hawaii Betsuin

[hawaiibetsuin.org](http://hawaiibetsuin.org)

2021 Slogan:

Building  
Healthy Sanghas:  
Nurturing Empathy  
and Respect

BETSUIN  
MINISTERS

Chief Minister  
Rev. Toyokazu Hagio

Ministerial Staff  
Rev. Yuika Hasebe  
Rev. Sol Kalu  
Rev. Shingo Furusawa

## Amida Buddha's View: all are radiant: all are precious: all are valuable!



Amida Sutra, one of the most important sutras in the Shin Buddhist tradition describes the lotus flowers in Amida Buddha's Pure Land as follows: *Those of blue color emit blue radiance; those of yellow color emit yellow radiance; those red of color emit red radiance; and those of white color emit white radiance.*

Please think that the description represents Amida Buddha's view. The Buddha sees that all colored flowers are beautiful and shining. Like the flowers, everything and everyone in this world has its own character, but from the view of Amida Buddha, they are all precious and valuable.

This country has many ethnic groups. Unfortunately, many race problems and negative incidents have occurred. However, please do not forget that Amida Buddha accepts all and says to all of us, "You are always shining" and "Your life is precious and valuable as it is."

In Gassho.

## Betsuin Updates!

from the Executive Director, Stacy Bradshaw



Happy August everyone! The State continues to encourage residents to get their COVID vaccinations as we see multiple days of new cases rising into triple digits. Although we have been successful in restarting our in-person Sunday services in the month of July, the ministers and leadership have put a hold on in-person Sunday services for the next couple of weeks (7/25 and 8/1). We hope the number of new cases will go back down, so we can resume regular in-person Sunday services again. The Hawaii Betsuin will continue to maintain the COVID protocols we put in place for the month of August. Ministers will be doing private in-person memorial services at the temple with up to 25 attendees. The columbarium is open for visitation during normal business hours. We will still be requiring masks, temperature checks, and completion of our waiver form for those having services or visiting the premises.

Business office hours are Monday thru Friday 9 AM to 4 PM, weekends from 9 AM to 12 Noon.

We are continuing sponsorships of Bon lantern through August. Please contact the temple for more information. Please do not hesitate to contact us if you have any questions or concerns. We are here for you!

## Dharma Message: "Bitter memory"

Rimban Toyokazu Hagio

It is said that a person's debt of gratitude to his/her father is higher than the highest mountain, and that his/her Mother's love is deeper than the deepest ocean. Only human beings are able to express their appreciation.

When I was in the 5<sup>th</sup> grade in elementary school, I was a rascal boy. One day after school, I played with friends until almost evening. As three of us were walking home, we came to a peach farm and saw that each peach was covered with a paper bag. At that time, we felt so hungry that we stealthily entered the farm and secretly broke a paper bag. Unfortunately, that fruit had not yet ripened, so we tried 2 or 3 more

bags, but those peaches hadn't ripened either! Can you guess what we did? We took sticks and knocked down peach bags from 2 or 3 trees! Then we went home.



Toyokazu Hagio  
Rimban

While we sat at the dinner table, the fruit farm owner came to my home and said we had destroyed the fruit trees. My father got so angry that he hit my head with his fist and said "Bakatare-ga." I still remember the pain. This is my bitter and painful memory.

I never understood why we had knocked down the peach bags...Many years later, as a university student, I met Tannisho's words that "Under the influence of our Karmic past, we human beings will do anything." Buddhism begins with recognizing the reality of life: "Life is suffering," and its cause is "the life of impermanence and blind passions or "ego and self-attachment." Concerning "impermanence," we leave it to Buddha and say the Nembutsu.

At this time I'd like to have a try at analyzing "ego self-attachment." Ego self-attachment is the basis of blind passions. Its three poisons are greed, anger and ignorance. When I tried to steal the peaches because we were hungry, this was greed. Then when we saw that the peaches hadn't ripened yet, we got angry. When we destroyed the peach bags, it was disappointment, hate, and envy. These were based on the three kinds of acts, physical, verbal and mental. The most basic important act among the three acts is mental because your mind influences the verbal and physical. Therefore, it is very important to purify your own mind.

Once Bai Juli asked Master Daolin what the Buddhist path really is. Immediately,

## Dial-A-Dharma Message (Recorded message)

English  
(808-536-2456)

Japanese  
(808-354-0261)



the Master answered: the Buddhist path is the Teaching of doing good deeds, not doing evil deeds, purifying the mind, and becoming a Buddha. Hearing this, Bai Juli retorted: Even a three year old child knows that! Without missing a beat, the Master replied: what a three year old knows, even an 80 year old cannot do.

As Shinran Shonin mentioned "Under the influence of our karmic past we human beings will do anything." Namu Amida Butsu is the calling voice of Amida Buddha, instructing us to put our trust in Amida to save us. Amida Buddha sympathized with foolish beings who could not distinguish the difference between a falsehood and a truth, and gave us the means for our salvation by way of the Nembutsu. Nembutsu resonates throughout the world and constantly calls us to recite the Nembutsu and entrust ourselves to the true salvation it brings us. Amida's calling voice becomes one with ours and reaches us here and now. Through the recitation of the Nembutsu, we reverently hear the call of the great compassion of Amida Buddha. Let's recite Nembutsu.



# GOJI

The **GOJI** is a monthly publication of the Honpa Hongwanji Hawaii Betsuin, Tel. (808) 536-7044. There is no newsletter published for the month of August.

### DEADLINE:

Articles must be submitted no later than the 10th of the month prior to publication by e-mail (execdir@hawaiiibetsuin.org), mail (1727 Pali Hwy, Honolulu, HI, 96813) or fax (536-0919). Address submissions to the **GOJI**. Please include your name and contact information. Original images should be labeled on the reverse side with caption and return information.

### GOJI STAFF:

Editorial: *Jo desMarets; Dianne Ida, Randy Kawamoto, Rev. Yuika Hasebe, Japanese section editor* Production: *Stacy Bradshaw, Colleen Kunishige*; Circulation: *Stacy Bradshaw*; Contributing reporters from *Hongwanji Mission School, Buddhist Women's Association, Dharma School & Parents, Project Dana, Wednesday Gang and Gals, Green Team, Boy Scouts, Girl Scouts, Pacific Buddhist Academy, Betsuin Board and Social concerns, and the Kyodan*

The opinions expressed by individual contributors are their own and do not necessarily reflect those of the Honpa Hongwanji Hawaii Betsuin.

## President's Message from Dexter Mar



### Ready! or Not?

By Dexter Mar



*I am a link in Amida Buddha's golden chain of love  
that stretches around the world.*

**I must keep my link bright and strong.**

The often overlooked second sentence of the Golden Chain of Love demands being prepared for the inevitable difficulties that will happen on our life journey. As a connected link to all others, my actions ripple into the lives in our community. So, as a Buddhist, **readiness** is required in following the Dharma path.

### Ready for Obon?

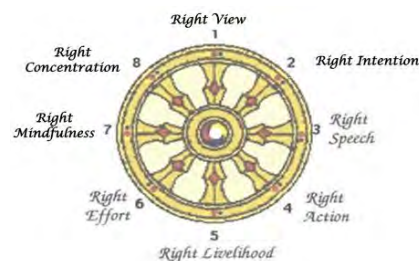
As Bon ***“Season of Remembrance and Appreciation”*** continues through August, it is especially touching with the passing of Rev. Yoshiaki Fujitani whose funeral is August 15, the passing of Sensei Rev. Dr. Al Bloom in August 2017, and my mother, Nancy Mar in August 2015. Though Hawaii Betsuin has again cancelled combined group Obon services this year, individual family services are available. Obon memorial lanterns are also available again this year for display in the Hondo until September. They can be viewed during Sunday services this year. Keep your links to loved ones bright and strong.

### Ready for Peace?

August also marks the beginning of the Hongwanji ***“Season of Peace”*** which starts on August 9 with the Hawaii Betsuin Peace Walk and ends with International Peace Day on September 21. After a virtual 2020 Peace Walk, the 4-Petals partners of Quakers, Buddhists, Catholics, and Protestants will participate in an in-person “Silent Journey” from Hawaii Betsuin to the Nagasaki Peace Bell in the cause of nuclear disarmament. In 2020, the Hongwanji International Peace Day featured the statewide ringing of 100 bells. Let's prepare for Tuesday, September 21, 2021!

### Ready for Life?

COVID-19 remains a local and global threat, AND hurricane season runs from June-November. For the sake of your family, friends, and community please **BE PREPARED**. In Buddhism, we are taught that the World is burning and to fight the fire, we follow the 8-fold path. Starting with good information, we proceed with planning, organization, action, and energy. Get vaccinated and have those hurricane survival kits ready!



Hope to see you at the temple soon! Namoamidabutsu!!

## BWA News and Events

Fujiko Motobu

## Curiosity Can Teach You Things

As I get older I get more and more curious, probably because I did not listen more carefully when I was young. I realize that Amida Buddha, like God in Christianity is not a human being; therefore, we do not categorize Buddha as being a male or female. In Jodo Shinshu, those who studied and sought answers, like Honen Shonin, Rennyo Shonin, and Shinran Shonin were all men. Until Shinran Shonin, none of the male ministers got married. Honen Shonin, who was Shinran's teacher, told him to get married to Eshinni sama. Since then, the ministers are able to get married and raise their families.

Where do the women come into the picture in Buddhism? I often wondered about that. I recently found out that the monks originally were made up of women, and Eshinni and Kakushinni were among the first notable monks. With the inception of marriage being allowed in Jodo Shinshu, other Buddhist sects also adopted the practice and the propagation of Buddhism expanded. Having both men and women ministers is important.

For spiritual and emotional guidance, men and women need both men and

women ministers to guide them through their confusion and devastation.

Occasionally, a male minister may not fully comprehend a woman's emotional problems, nor can a female minister understand a man's problems in overcoming their livelihood.

We are fortunate in that today we have both men and women ministers to guide us. Spiritual understanding is very vital and necessary in living, and in today's world we need to fully understand what Jodo Shinshu teaching is all about. Get to know your ministers well and converse with them whenever possible.

Informal atmosphere emits a lot of information. Ministers are intelligent, well-educated good listeners who can guide you in the right direction, so get to know them informally and appreciate their every gesture.



## We're Collecting Aloha Shirts

The Betsuin BWA is collecting Aloha shirts to send to military members stationed overseas. We have joined forces with a group based in North Carolina called Hawaiian Shirts for Deployed Soldiers (

The group started a few years ago when the founder's son was heading for Iraq. He had an aloha shirt that he bought while on vacation in Hawaii prior to being deployed. He took the shirt with him to Iraq and his Army buddies were so taken by the shirt that they all wanted one. He wrote to his mom and she undertook the mission of collecting aloha shirts and sending them to him for his friends.

On the Hawaiian Shirts for Deployed Soldiers Face Book page, it was recently reported that, over the past seven years, 27,000 aloha shirts have been sent to our military by this group! We sent 38 shirts last month and will continue collecting shirts.

If you have aloha shirts to donate, please contact Jo desMarets via email [purpleldy2@aol.com](mailto:purpleldy2@aol.com) for more information or to donate shirts.

## Upcoming BWA Activities

Honolulu United BWA - Membership and Education Program  
Building A Healthy Sangha: Nurturing Empathy and Respect  
August 14, 2021, 8:00 a.m. – 12:30 p.m.

## Postcard Mailing

We are assisting the temple in a postcard mailing to temple members

Reminder: 14th BWA Hawaii State Conference, April 23 – 24, 2022, on Maui. Flyer #4, sent out. Please contact Florence Wasai to put your name on the list, or for more information.



# 12<sup>th</sup> Annual

## Four-Petals PEACE WALK

*Peace starts one step at a  
time*

***Please Join Us!***

# ***Monday, August 9, 2021***

Join a multi-faith service & silent walk to remember the **76<sup>th</sup> anniversary** of the atomic bombing of Nagasaki, Japan and the **15<sup>th</sup> anniversary** of the 1600-mile pilgrimage of three Buddhist monks to save humanity from the cycle of nuclear destruction. Join the "Silent Journey" from the Hongwanji Buddhist Temple to the Nagasaki Peace Bell Memorial at Honolulu Hale to express our gratitude for another year without global nuclear destruction and our hope for continued nuclear restraint.

**Monday, August 9<sup>th</sup> - 5 pm service; 5:30pm walk**

**Registration required:** Service participants limited to 25

#### LOCATION

Hongwanji Buddhist Temple,  
to Nagasaki Peace Bell



1727 Pali Highway, Honolulu, HI

# New Program Coming In September 2021

**\*\*\*ANNOUNCING\*\*\***

## Hawaii Betsuin DIALOGUE Project begins in September!



*“Dialogue is the collective compassion for the common good. It is meeting with meaning, participation and purpose, speech in the service of others; we might not get the correct answers, but we get closer to asking the right questions.”*  
—from ‘What If’ by Amanda Gorman, 2019

**YOU ARE INVITED to the inaugural meeting of the Hawaii Betsuin DIALOGUE Project!** If you are interested in exploring social issues with others through a Buddhist lens, then the Hawaii Betsuin DIALOGUE Project is for you!

**WHEN:** Thursday, September 2, 2021, 7:00 to 8:30 pm, and alternating first Thursdays thereafter (i.e., November 7, January 6, etc.)

**WHERE:** Hawaii Betsuin, 1727 Pali Highway, where we hope to dialogue in person, room TBA!

**WHAT:** *Be the Refuge: Raising the Voices of Asian American Buddhists*, by Chenxing Han, will be the subject of the September 2 dialogue. Brief readings (not whole books!) will prepare us for each dialogue. Future subjects and readings will be decided by you, the DIALOGUE Project participants.

**Author Han says of *Be the Refuge*,** “The book is very much built on conversations, and my hope is that it will spark conversations on issues such as culture, history, representation, and race in American Buddhist communities.” See also <https://readingreligion.org/books/be-refuge>.

Note that Ms. Han will be the featured speaker for Betsuin's 22nd Annual Bloom-Futaba Memorial Lecture on October 16, 2021, so you don't want to miss this September 2 dialogue!

**TO REGISTER:** Please go to (<https://forms.gle/m67PxJ4xov4BeXvSA>) and complete the Google Form to receive the readings and meeting location or (if necessary) a Zoom link. The DIALOGUE Project is an initiative of the HHHB Social Concerns Committee.

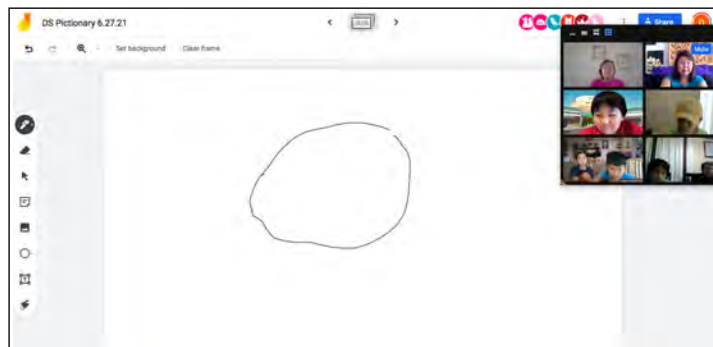
# Dharma School News

## Summer 2021 - Dharma School Activities

Debbie Kubota

On Sunday, June 27, we had a fun virtual Dharma School activity session on Zoom. We had Dharma School students and families participating from the Hawaii Betsuin, Jikoen Hongwanji, Mililani Hongwanji and Hilo Betsuin, as well as a Betsuin family who joined us from Maryland.

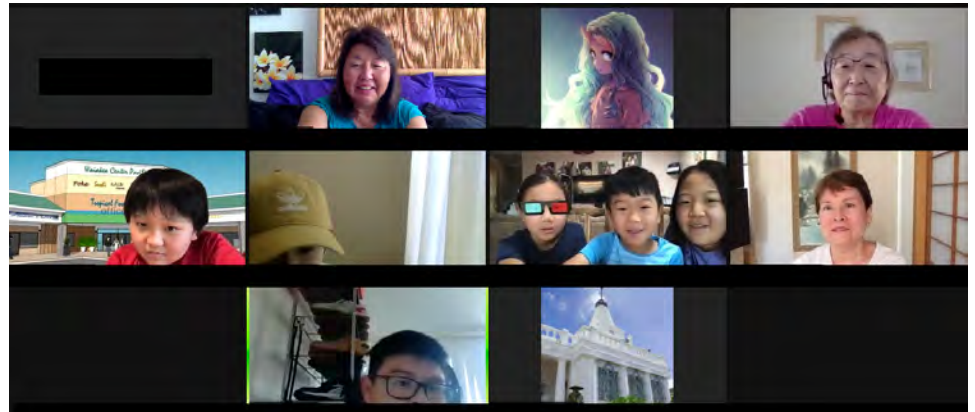
Together, we created two stories in which each individual/family contributed one line at a time to make up a fun story. Then everyone took turns playing a Pictionary-type game, in which each person drew something on a shared screen (Google Jam Board) while the others guessed what they were drawing. We had some creative drawings of the Big Island, a Raisin Bran cereal box, a USB flash drive, a Doritos chip bag, and the Daniel K. Inouye International Airport. It was a wonderful session filled with fun and fellowship. We plan to get together for another fun virtual session on Sunday, July 25.



activities will start up again on Sunday, September 12. We plan to have a hybrid format with both in-person and virtual participation options. No matter what your age, our services are open to all generations from across our islands and the Mainland. Please contact our Betsuin office if you are interested. Hope to see you in person or online with us very soon!

We look forward to getting together in person for our annual Honolulu Dharma Schools Registration Day at Hongwanji Mission School on August 29. The day will begin with a short service, followed by an ice breaker so everyone can get to know each other better, and a craft activity. The pool and gym will be open for our families to enjoy, then everyone will have a bento lunch.

Dharma School services and



### BETSUIN FRIENDSHIP TELEPHONE TIME

If you would like to talk story, please call the Hawaii Betsuin at 536- 7044.

A minister is available  
12:30 PM-1:30 PM  
Monday to Friday  
to receive your phone calls  
and talk story with you.

Pre-ordered Bento - Tshirts - Tote Bags - Music - Fun Performances



Drive Thru  
**Bon Dance**  
Experience!

Saturday,  
August 28, 2021  
10:00 am to 4:00 pm

**Radio Programs  
AUGUST 2021  
KZOO 1210 AM  
Japanese Language  
Saturday at 7:30 AM**

8/07 Rev. Yuika Hasebe  
8/14 Rev. Shingo Furusawa  
8/21 Rev. Ryoso Toshima  
8/28 Rev. Toshiyuki Umitani

**NOTICE:**

The Betsuin is now scheduling in-person funerals and memorial services with a limit of 25 attendees. Other options are available. Please call the office at 536-7044 for more information.

The 10:00 am English service, and the 8:00 am and 1:00 pm Japanese Sunday services are now in person, with limited attendance, and via Zoom. Reservations are required for in-person services. Call the office to reserve a seat for the service.

Please contact the Betsuin office at 536-7044 for more information or see the Betsuin Bulletin, sent out via email on Fridays, to get the Zoom link or call the office at 536-7044. The Zoom service will also be available on YouTube soon after the service ends.

**In Memoriam**



**JUNE 2021**

The Hawai'i Betsuin extends its deepest sympathy to the families of the following members who recently passed away. May the family members and friends find solace and comfort in the Nembutsu. Namo Amida Butsu

06/17/2020	KAJIKAWA, Betty Kimie (99)
07/01/2020	MANAGO, Jay Jitsuo (94)
09/27/2020	KONO, Thelma Tomiko (96)
12/11/2020	TANAKA, Sumie (95)
04/25/2021	OGATA, Kenneth Kenji (92)
05/03/2021	MORITA, Yuriko (93)

**JUNE 2021**

06/10/2021	OTAKE, Francis Tetsuo (88)
06/11/2021	KANO, Owen Tun Dat (39)
06/12/2021	KAWAHARA, Yoshimi (98)
06/12/2021	MATSUMOTO, Gilbert Kazuo (76)
06/17/2021	AIMOTO, Walter Tamio (92)
06/28/2021	IWAI, Harriet Kiyoko (89)
06/25/2021	HIRAI, Jack Keiji

**Nursing Home Services  
are cancelled until  
further notice.**

**2021 Memorial Service Schedule**

2021 is the memorial year for those who passed away in:

2020: 1st year	2009: 13th year	1989: 33th year
2019: 3rd year	2005: 17th year	1972: 50th year
2015: 7th year	1997: 25th year	1922: 100th year



The great practice is to say the Name of the Tathagata of un-hindered light. This practice, comprehensively encompassing all practices, is perfect and most rapid in bringing them to fullness. For this reason, it is called "great practice." Saying the Name then breaks through all the ignorance of sentient beings and readily brings all their aspirations to fulfillment. Saying the Name is in itself mindfulness; mindfulness is nembutsu; nembutsu is Namo-amida-butsu.

-Shinran Shonin