



1727 Pali Highway
Honolulu, Hawaii 96813

GOJI

Vol. 73, No.6



JUNE 2018
NEWSLETTER
of the

Honpa Hongwanji
Hawaii Betsuin

www.hawaiiibetsuin.org

2018 Slogan:

Embrace Change:
Harmony
(Accept Differences)

BETSUIN
MINISTERS

Chief Minister
Rev. Toyokazu Hagio

Ministerial Staff
Rev. Yuika Hasebe
Rev. Arthur Kaufmann
Rev. Joshin Kamuro
Rev. Sol Kalu

2018 Obon Season Arrives At The Hawaii Betsuin!

The month of the Jodo Shinshu Buddhist tradition's most festive occasion, the O-bon season, is finally here. The O-bon season is often characterized as a "joyful gathering." It is the occasion to celebrate our fortunate life event, to be born as human beings, which was only made possible through the efforts and nurturing of those who preceded us, namely our departed parents, ancestors, and other loved ones who, according to the Jodo Shinshu tradition, have gone on to the realm of Enlightenment or Amida Buddha's Western Pure Land.

The most often preconceived notion about this annual summer observance is that O-bon is a time when the spirits of our ancestors return from the world of the dead to be among us for the duration of the O-bon observance. Memorial services are held at the temples in their honor, so the living may pay their respect and express gratitude; the O-bon season is not about worshipping our departed ancestors or loved ones. Those who have passed on to final enlightenment and Buddhahood neither demand nor require worship during this observance. Rather, O-bon is a time of reflection, of understanding the various causes and conditions that brought about the rare and difficult event of being born as humans and a time for joyful expression of gratitude to all beings past and present that make our continuing existence possible.

2018 Obon Schedule of Activities

Bon Dance Practice

Monday - Wednesday June 25-27, from 7:30 pm - 9:30 pm

Social Hall (Mon), Front Parking Lot (Tues & Wed - weather permitting)

Bon Dance

Friday & Saturday, June 29 & 30, from 6 pm - 10:30 pm

Front Parking lot.

Overflow parking at Hongwanji Mission School, Kawanānako Middle School, Soto Mission, and Cathedral School.

Combined Bon Mairi services on Saturday, July 28, and August 4, at 10 am and 5 pm. / Combined Hatsubon Services on Sunday, July 29 and August 5 at 5 pm.



Dharma Message: "The Golden Rule"

Rev. Sol Kalu



"Do unto others what you want others to do unto you"... Or stating it in the negative: "Don't do unto others what you don't want others to do unto you"

Most people are familiar with this saying as the "Golden Rule," a concept that describes a reciprocal or two-way relationship between one's self and others that involves both sides equally and in a mutual fashion. The golden rule, with roots in a wide range of world cultures, is well-suited to be a standard that different cultures can appeal to in resolving conflicts or misunderstandings, and it is endorsed by all the great world religions, including Buddhism. It is often regarded as the most direct and general principle of ethics. All the world's major religions

have quotations that state the golden rule, in different words, but nevertheless the meaning is the same. Buddhism has several versions of this ethical statement, among which are: "Hurt not others in ways that you yourself would find hurtful;" "Comparing oneself to others in such terms as 'Just as I am so are they, just as they are so am I,' "he should neither kill nor cause others to kill;" and, a direct quotation from Shakyamuni Buddha Himself: "One should seek for others the happiness one desires for himself."

wholesome or unwholesome, in one way or another in a future time. The Golden Rule in both its positive and negative affirmation, serves as a useful guide in our actions towards our fellow human beings and other life forms as well. To apply it requires us to know what effects our actions have on the lives of others and to be able to imagine ourselves accurately in the other person's place on the receiving end of the acts we do. We like to be respected by others, to be treated with kindness and consideration, so we should do the same. We dislike being hurt, judged unfairly, manipulated or controlled maliciously, or having our privacy intruded upon; therefore, we should strive never to do the same to others. To violate the Golden Rule is going against fairness and concern that lie at the heart of morality.

Namo Amida Butsu!



GOJI

The **GOJI** is a monthly publication of the Honpa Hongwanji Hawaii Betsuin, Tel. (808) 536-7044. There is no newsletter published for the month of August.

DEADLINE:

Articles must be submitted no later than the 10th of the month prior to publication by e-mail (execdir@hawaiiibetsuin.org), mail (1727 Pali Hwy, Honolulu, HI, 96813) or fax (536-0919). Address submissions to the **GOJI**. Please include your name and contact information. Original images should be labeled on the reverse side with caption and return information.

GOJI STAFF:

Editorial: *Jo desMarets; Dianne Ida, Randy Kawamoto, Rev. Yuika Hasebe, Japanese section editor; Production: Stacy Bradshaw, Colleen Kunishige; Joyce Tomita, Circulation: Stacy Bradshaw; Contributing reporters from Hongwanji Mission School, Buddhist Women's Association, Dharma School & Parents, Project Dana, Wednesday Gang and Gals, Boy Scouts, Girl Scouts, Pacific Buddhist Academy, and the Kyodan*

The opinions expressed by individual contributors are their own and do not necessarily reflect those of the Honpa Hongwanji Hawaii Betsuin.

Perhaps, its simplicity is what gives the Golden Rule its universal appeal and acceptance. Unfortunately, due to our blind passions and imperfections as unenlightened beings, the Golden Rule is as often violated as it is practiced. Due to greed, anger, ignorance, pride, jealousy, and other forms of poisonous passions, it is an unfortunate reality that the base of human behavior is centered upon the gratification of the self or the ego. Religion or education in ethics and morality may help curb excessive self-centered desires, but when the right causes and conditions are present, we are capable of inflicting pain and suffering, both physical and emotional, on others to meet the demands of our egotistical self. The golden rule in this situation doesn't apply; we will do as we please without consideration for the feelings of others.

It is always wise to reflect on the fundamental Buddhist teaching of the law of cause and effect, that we will reap the consequences of our actions,

Calling All Bakers!

Requesting donations of
your delightful bake
goods to sell at the

Bon Dance

June 29 & 30!

Please drop off at the

Betsuin Office

the week of June 24th.

Mahalo for
your kind
support!



Betsuin BWA News and Events

BWA always needs help from its members, so if you have the time, please see President Wendie Yumori or 2nd VP Lianne Wong and volunteer your services.

HONPA HONGWANJI HAWAII BETSUIN BUDDHIST WOMEN'S ASSOCIATION BY LAWS:

By laws need revision occasionally, and soon the members will be given an opportunity to accept the revised by laws at one of the general membership meetings. The committee members have been working diligently in updating the bylaws.

GOJI NEWSLETTERS:

All of you receive your Goji newsletters every month except in August when the staff is on vacation. Many BWA ladies go and help with the mailing preparation. Usually the ladies help for about 4 hours, inserting inserts, folding the paper, and stuffing into envelopes. The office staff members have been very generous and kind in supplying lunch for the BWA helpers, therefore, it was suggested and agreed that BWA donate \$50.00 per month. With six months left to go this year, \$350.00 has been donated to the office staff for the lunches. All of you being BWA members should be aware of this, and you can doubly enjoy reading the Goji and or volunteer and help stuff the envelopes.

COMING EVENTS:

1st VP Dianne Ida has been working hard and planning on our annual BWA temple visitation day excursion which usually occurs in the month of July. Saturday, July 21 is the date, therefore please keep your calendar free of other activities, so you can all

enjoy our annual outing. Details will follow in next month's issue.

ELECTION OF OFFICERS FOR 2019-20 will be coming up in October. If you are interested in serving as an officer, please see Fujiko. The new slate will be made by September, for election in October.

YOU ARE ALL TERRIFIC!

The final count of our Dana Day Contribution came up to \$5,215.00.

THANK YOU TO ALL OF YOU. Our goal was to go a little over \$4,000 but you made it go over by a thousand dollars. When the recipient group will be selected, you will be notified. YOU CERTAINLY HAVE SHOWN ALL OF US YOUR HEART OF GIVING, THE TRUE JODO SHINSHU TEACHING.

HAWAII BETSUIN BOARD OF DIRECTORS:

President Dexter Mar meets monthly with his executive board of directors and then with the general board members. I thought it might be of interest to inform you of some of the statistics or make up of the board. There are 10 officers, of which eight are men and two are women. In the general board level, there are 22 members, 13 men and 9 women (5 are BWA members). There are 9 ex officio members, of which five are our ministers and in this group of 9 there are 5 men and 4 women.

There is a total of 41 members, of which 26 men dominate and there are 15 women, in minority.

All of the officers and members in the board work very hard, but unfortunately many are very busy and we do not see them often. Hopefully we will see them more frequently at the temple during the services, and they can

Fujiko Motobu

take the lead role by being the MC for the day. Undoubtedly the members would like to get to know them.

For the 100th centennial celebration, a towel has been designed and will be made available in or around October and at the bon dance next year. It is very attractive and pretty and I am sure you will all love the beautiful design.

BRAINSTORM IN BUILDING MEMBERSHIP:

We need input from all of you on how to increase our membership. It would be nice if all of our children followed their parents and continue to propagate Jodo Shinshu teachings. This then becomes the parents' responsibility. My grown adult child said once, I don't like to go to church because all they want is money, money, money. Somehow that may be true, for we are asked for monetary donation six times a year at the "Roku daihoyo." Perhaps the emphasis should be on Dana or Selfless Giving concept being instilled in us through sermons by the ministers and leaders. The feeling of giving from the heart must be taught and be instilled in our heart.

INTERGENERATIONAL PICNIC AT MAGIC ISLAND FOR HAWAII BETSUIN, JIKOEN, MOILILI, KAILUA:

The members, young and old got together for a fun day picnic at Magic Island on Sunday, May 6. A morning service was held with the Rev. Hasebe conducting the service. Then, the fun began with lots and lots of fun games for the children as well as the adults, and there were lots and lots of prizes. It was a bright and sunny day with gentle breeze that made the day very

CONTNUED ON PAGE 5

June 2018 GOJI: President's Report by Dexter Mar

This is a summary of issues of concern and actions taken from the May 5 Board meeting. Our operational income and expenses continue on track. Attendance at various services remains stable. The number of April memorial and funeral services was the same as 2017, with continued year-over-year gradual decline.

Dr. Margaret Oda

The Board expressed its condolences to the family of Dr. Margaret Oda who passed onto the Pure Land on April 15. Margaret served on the Betsuin Board of Directors for many years and was a dedicated Hongwanji member and student of Shinran's teachings.

Memorial & Funeral Service Improvement

Our ministers are considering a number of changes that might improve our memorial services. Please share your ideas and concerns with them or leave a note at the Business Office.

Obon season will begin on June 29-30 with the Bon Dance that celebrates our connection with the Community. Rimban Hagio will lead a short pre-Bon Dance service in the Hondo rather than opening the Bon Dance from the Yagura. Our Obon major service will be held on Sunday, July 8 for our members and visitors to listen to the teachings, feel the Nembutsu and express our gratitude. Finally, Bon Mairi services will be held on July 28-29 and August 4-5 for our families to come together in remembrance and gratitude for our dear departed, loved ones who continue to influence and support our lives today.

Donor Recognition

As part of a broad review of how to thank Betsuin donors for their support of the temple and its programs, the Board began considering how to show gratitude to those who donate at our six major services (Shinran's Memorial Day, Spring/Fall Ohigan, Shinran's Birthday, Obon, and Sangha Memorial Day (Eitai-kyo).

Thank you letters and / or GOJI recognition are under discussion. Please share your thoughts on a note and drop it off at the Business Office.

Facilities Issues

The Board approved immediate repair and maintenance of:

1. Lounge rug replacement so area can be returned to regular use. (\$16,000)
2. Annex Hall tile floor removal. (\$22,300)
3. Annex lanai and walkway rail replacement due to age & too low. (\$50,000)
4. Kitchen door mesh screens for flying insect control. (\$200)

Other work-in-progress items :

1. Main Social Hall drinking fountain (Find a vendor)
2. Bathroom electronic locks (carpentry underway)
3. Ministers' Office air conditioning (equipment on order)
4. Main Lusitana driveway re-paving (getting estimates)
5. Storage for rummage sale (exploring several options)

Longer-term projects are also under review for 1-5, 6-10, and 11-15 years.

If you have facility concerns or ideas, please drop a note, with your name and contact information, at the Betsuin Business Office.

Emergency Preparedness and Security

Coordination of First Aid and Fire Safety procedures with Hongwanji Mission School and Pacific Buddhist Academy is underway and programs will be announced in June.

PRESIDENT'S REPORT CONTINUED FROM PAGE 4

Executive Director Report

New Ballroom Dancing Club will begin using the Social Hall on Monday evenings from June-December. Open to Hongwanji members and friends. Contact Business Office for the latest information.

Come Join Us!

This brief message captures only a few of the many subjects the Board deals with each month. Minutes of the meetings are available from the Betsuin Business Office. You are also welcome to attend our Full Board meetings, which occur each month:

Full Board Meetings (Sundays, about 11:30am)

June 3	October 14
July 15	November 11
August 19	December 16
September 9	

Thank you all for your support of our volunteer Board of Directors; and please continue to express your gratitude for the legacy of our beautiful Betsuin temple and 100 years of devoted service to our Sangha.



With hands together in Gassho,
Dexter Mar

BWA CONT. FROM PAGE 3

pleasant. The Dharma School teachers and parents devoted their time to make the activities fun for all. The only downfall was in the lack in the number of older member participants. Hawaii Betsuin had quite a few BWA members and they all enjoyed the activities, lunch and fellowship. BWA's senior members were there and had a lot of fun participating in the games. Fujiko, all of 88 years old, with Liane Wong as partner, raced in the slipper-partner walk race, and they came in second place, only a second behind Barbara Brennan and her young partner. Fujiko and Liane beat Rev. Hasebe and all others, so you can't underestimate the determination and talent of the elders. Many of the 10 o'clock service participants were missing. If they had gone to the picnic everyone would have had a grand time for sure. Let's go the next time we are invited.

THE DEAD TREE FRONTING THE NEWLY REPOSSESSED BWA ROOMS (ESHINNI ROOM AND LOTUS ROOM)

Due to termite tenting of the annex building, the pine tree fronting the building was killed, and now stands a sorrowful dead pine tree. A suggestion of replanting a Bodhi tree was mentioned, but Fusae Kiyokawa, knowledgeable about botany said that a Bodhi tree is like the banyan tree, with huge roots that can damage many of the surrounding things, therefore, she would not recommend a Bodhi tree.

If we left the dead pine tree alone, perhaps from the bottom root area, new shoots may appear. If that would happen, we have nothing to worry about. Does anyone have any great idea? Please share.

NOW FOR SOME HUMOR

There are two ways a sermon can help: Some rise from a sermon greatly strengthened, others wake up greatly refreshed. Which one are you?

Honpa Hongwanji Hawaii Betsuin

Request/Suggestion Note

Your Name: _____

(REQUIRED)

Contact Information: _____

(REQUIRED: phone; email)

Date: _____

Group Affiliation: _____

(BWA, Scouts, HMS, PBA, etc.)

URGENCY

☐ Needs attention TODAY (Emergency)

☐ Needs attention IMMEDIATELY (24 hours)

☐ Needs attention SOON (72 hours)

☐ Needs attention THIS WEEK

☐ Needs attention THIS MONTH

☐ Needs attention THIS YEAR

Comments



From the Green Team

March and April were busy months for the Hawaii Betsuin Green Team. Following are assorted highlights and mahalos.



Taste of Hongwanji

At the Green Team booth, we hosted an art activity where all ages used plastic bits collected from the beach

to make a collage of a humuhumu fish. Thanks to Kokua Hawaii Foundation for the idea and box of marine debris!

We also sold bamboo utensil kits with wraps hand-sewn by our "Mottainai Sewing Team" from surplus fabric. They were very popular. Thank you

Arlene, Sharon, Claire, and Tamayo for sharing your skills and time for Green Hongwanji!

We deployed six recycling containers to collect cans and water bottles. They are collapsible frames hung with see-through bags and simple signage. Mahalo Boy Scouts for the design, Mikey for making them, and Girl Scout Brownies for paying for the materials! They worked extremely well — let us know if you want to use one or more for your event.

Green Fair 2018

Our 2nd Annual Green Fair on April 15 was a big success. Thank you BWA, Dharma School, Girl Scout Brownies, Cub Scouts, Green Team, Mottainai Sewing Team (many utensil kits sold!), and EM Hawaii for all the fun and educational activities! And mahalo to Rev. Kalu for his green-themed dharma talk preceding the fair. (See also the Dharma School report in the May Goji.)

Earth Day Service

On Earth Day (April 22), a bamboo frame decorated with greenery,

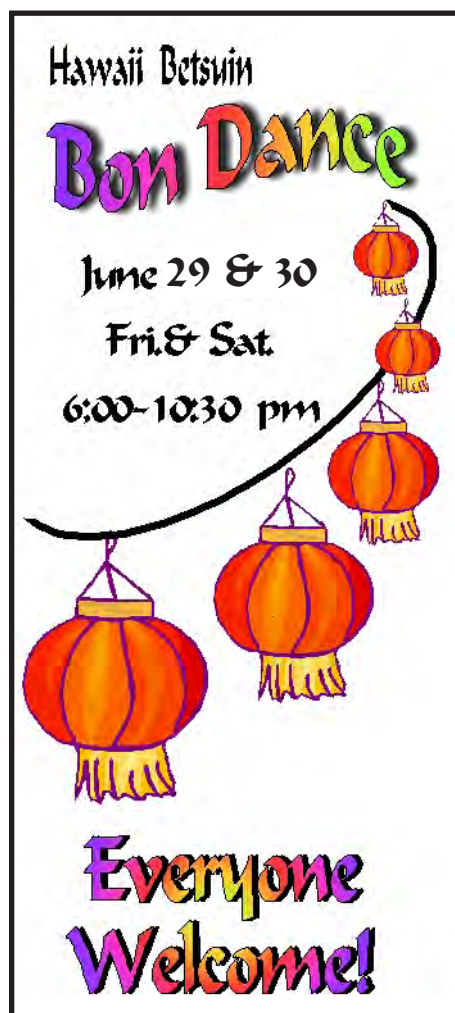
flowers, and a photo of Earth from space greeted visitors to the temple. Indigenous scholar Dr. Manulani Aluli Meyer was guest speaker at our 10 a.m. service. She spoke of her experiences traveling in the footsteps of the Buddha, shared concepts in Buddhism and Native Hawaiian understanding ("the same, differently"), and the time being ripe for collaboration in Aloha ʻĀina. Among the many attendees were over a dozen first-time visitors as well as Bishop Matsumoto and HHMH President Pieper Toyama.

Dr. Meyer taught us an oli:

***"Ulu a'e ke welina a ke aloha
Loving is the practice of an awake
mind"***

...and remained with us for dialogue after the service. Mahalo, Manulani!

- David Atcheson, Green Team Convener (greenteaminfo@hawaiibetsuin.org)



Dharma School News

Saturday, April 21 - Shabu Shabu & Game Night

Inviting aromas of meat, tofu, seafood and veggies cooking in delicious soup broth filled the air as over 60 members of our Dharma School ohana cooked their shabu shabu dinners in the Betsuin Social Hall. Reverend Yuika Hasebe kicked off the event with a service, featuring a delightful Dharma Talk about two mischievous kittens, featuring her skillful artwork to convey the story. She captivated the sangha, both young and old with her meaningful message. After the service, the adults went off to the kitchen to help with dinner preparations while the children and ministers practiced singing the songs for the Eshin-ni Kakushin-ni Day service. Families generously brought a variety of ingredients to make shabu shabu so there was plenty of food for all. Trays and trays of meats, seafood, tofu and veggies were cooked in beef or chicken soup broth. Everyone had fun cooking their meals together, and experimenting with different dipping sauces for the best tastes. After the delicious shabu shabu, there was a table full of desserts to top off the meal. The rest of the night was spent in fellowship, talking story and having fun playing board games. It was great to see both young and old enjoying each other's company.

Sunday, April 29 - Eshin-ni / Kakushin-ni Day

This special service to honor Shinran Shonin's wife and daughter was conducted by the Dharma School. Dharma School students Sarene Bradshaw and Kainoa Brennan offered flowers, while Talin Giang and Miyaka Nishihira offered candlelight. Emcees were Dharma School students, Naho Umitani and Byron Saito. To begin the

service, under the direction of supervisor Laura Nakasone, the ministers joined the Dharma School students, parents and teachers from the altar, singing two songs for the prelude, "Golden Rule" and "This Day of Peace." During the service, the Dharma School ohana shared two original songs, "Living the Golden Chain" and "It All Starts with You." The gatha, "Do the Good You Know," was led by the Dharma School. Downstairs in the Social Hall, the Dharma School ohana sang once again while joined by the Betsuin Choir to sing another original song, "The Life You Lead." What a wonderful day of music!

Sunday, May 6 - Honolulu District Intergenerational Picnic

It was a beautiful morning to be outdoors as the Honolulu temples gathered for the first (and hopefully, annual) Honolulu District Intergenerational Picnic. Reverend Yuika Hasebe opened the event with a service overlooking the beautiful blue Pacific Ocean and a spectacular view of the Ala Wai Boat Harbor and Diamond Head. The Chinese Zodiac Animals were used to divide up the groups and intermingle the sangha from the various temples. The animal groups were given a stack of newspapers and a roll of masking tape to make a creation depicting "Find Your Path." It was fun to see how creative our Dogs, Roosters, Boars, Mice, Rabbits, Snakes, Monkeys Horses, Tigers, Sheep, Dragons, and Oxen, were in coming up with their "paths." Everyone took turns showing off and explaining their creations, which included a Dharma Wheel, a timeline depicting significant life events, an actual path made of footsteps avoiding obstacles, a canoe with paddlers, a hot tub, and roosters who played an important role in bringing about peace. Next up was Moilili's activity, "Tanomoshi Moshi," in which both young and old went

Debbie Kubota

out to pick up household items, snacks and produce by age groups. All in attendance had bags of toilet paper rolls, microwave popcorn, apples, onions, potatoes, and sponges to take home with them. Jikoen led a "Chodai Chodai" activity in which prizes were given to those who were the first to bring up such things as a CVS/Longs receipt, 3 different generations of people, colored underwear, and a 1999 coin. The Betsuin Dharma School Teachers ran activities for all ages, starting off with a "tamaire" game in which Brian Brennan and Dave Atcheson ran around with laundry baskets strapped to their backs while 2 teams tossed ping pong balls into the baskets. Participants of all ages enjoyed relays including 2-person geta race, 3-legged race and dressing race. Under shade from the tents and trees, everyone enjoyed their lunch and fellowship—bentos, snacks and fruits. Dave Atcheson set up a solar oven demonstration in which the temperature from the sun, reached over 350 degrees—high enough to bake a tray of delicious brownies for dessert. Afternoon fun included kicking a soccer ball and tossing a football, along with playing with bubbles. Even the young at heart, including our own Fujiko Motobu, enjoyed bubble fun. We all wished this perfect day would never end, but look forward to round two, another Honolulu District Picnic next year.

Stay tuned for our last day of Dharma School on June 3 with a break during the summer months and then our annual Dharma School Registration Day at Hongwanji Mission School on Sunday, August 12.

Hawaii Betsuin Centennial Ride Team Seeks Riders!

In this centennial year of the Hawaii Betsuin temple building, a team is forming for the 2018 Century Ride organized by Hawaii Bicycling League. The ride is September 30, 2018 and begins and ends at Kapiolani Park. The Betsuin team members will be raising funds for the temple's Centennial Fund by collecting per-mile pledges. Individual riders can choose the distance they want to go: 25, 50, 75, or the full 100 miles. There is also an Aloha Fun Ride option for

9 or 18 miles. Would you like to join us as we have fun, get ourselves in shape, and help the temple get in shape for the next 100 years? Register for the ride at <https://www.hbl.org/honolulucenturyride/> and contact our team convener, David Atcheson, at atchesond@gmail.com or via the Betsuin office.

More details to come in the July issue regarding making pledges. In the meantime, please pass the word to potential team members. Affiliates welcome! And, if making



a pledge sounds like a good way for you to help the temple in this centennial year, be thinking about what size -- \$5, \$1, \$10, or 1 share of stock per mile? Mahalo for your consideration.

- David Atcheson

News from the HHMH Social Concerns Committee

The Bishop's advisory Committee on Social Concerns (CSC) approved disaster relief funding in the wake of flooding on Kauai and Oahu. The committee allocated \$4000 to be distributed via Kauai Hongwanji Council (KHC) and \$2000 for Kapaa Hongwanji to assist member families and Hanalei Nihonjin Kai Cemetery. The committee also approved \$1100 to the Hawaii State VOAD (Voluntary Organizations Active In Disaster) for Kauai and Oahu flood relief efforts (\$100 of that is from Mililani Hongwanji Lotus Connection).

Many have asked about the situation on the Big Island due to the Kilauea eruption and its effects, particularly in the Puna district. As of this writing, we do not have reports of Hongwanji members suffering damages, though some have had to evacuate and some experienced loss of electricity and internet. Big Island temples are

evaluating how they can contribute to general relief efforts. Some have donated to shelters, some are considering offering use of their kitchens or other facilities. HHMH should have more to share soon on this dynamic situation. In the meantime, a good resource is <https://www.punalavaflow2018.com/>. The website includes ways to help — use your best judgment.

There is no targeted Hongwanji Social Concerns fund drive at this time apart from the general HHMH Social Concerns fund drive with donations collected by individual temples. Donations through September will be counted as part of the current year's drive.

Medical aid in dying: With passage of new legislation legalizing medical aid in dying, questions to ministers are anticipated. The chair of the CSC (Dean Sakamoto) and the co-chairs of the Compassionate

Care Committee (Revs. Yagi and Hasebe) sent a letter to the state ministers association president (Rev. Hironaka) urging that ministers prepare to respond to such questions.

Other recent CSC activity includes approving a few non-emergency related grants and preparing for an interactive Social Concerns workshop to be held at the HHMH Joint Conference in early September.

Remember, if a small grant would help make your idea to put the Dharma into action a reality, consider submitting a Golden Chain grant application (info and form at <http://bit.ly/goldenchain2018>).

Our committee next meets on August 11.

- David Atcheson, Committee on Social Concerns member

HHMH Joint Conference Is Sept. 1-3; Registration Still Open

Groups and members from throughout Honpa Hongwanji Mission of Hawaii will come together September 1-3, 2018 at the Ala Moana Hotel, Hawaii Betsuin, and Magic Island for a joint conference.

The keynote speaker is Hawaii's Lieutenant Governor, Doug Chin (the former state Attorney General). The talk will be followed by a dialogue with Chin and Bishop Matsumoto exploring Buddhist teachings related to the conference theme Embrace Change: Harmony (Accept Differences).

There will also be meetings for specific groups, including BWA, Dharma School teachers, ministers' spouses, lay leaders, and Jr. YBA. The conference offers many diverse workshops including arts and music, social concerns, Islam, LGBTQ awareness, and more.

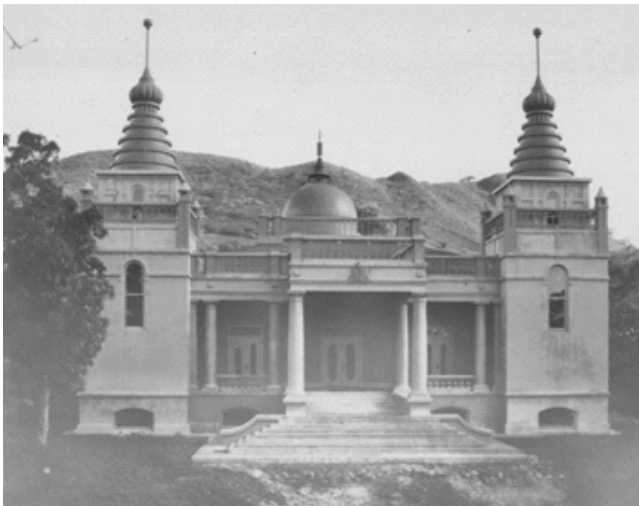
Registration is \$280 (includes six meals, workshops, and materials) and is due by July 20. Forms are available in the Headquarters and Betsuin offices and are also online at hongwanjihawaii.com (see the blue Joint Conference button in the Coming Events area).

If you are unable to come to the temple and would like to have a minister visit you in your home, please call Rev. Yuika Hasebe at 536-7044 to request a home visit.



We miss you and do not want to lose contact with you!

Mark Your Calendars: July 22, 2018! Betsuin Temple Centennial Celebration Service



In July 1918, our landmark Betsuin temple was dedicated to serve the Hongwanji members and share Buddhist teachings with the Hawaii Community.

Come to our special observance of Bishop Yemyo Imamura's vision that truly changed the world!

Summer at the Buddhist Study Center

June 9 Dr. Jeff Wilson,
"Buddhist Influences in American Culture"
Saturday 9 am-12 noon
Location: Buddhist Study Center

June 21-July 19 Dharma Light class: Dexter Mar
"Searching for the Buddha: Walking the Middle Path"
Thursdays 6:30-8:30 pm
Location: Buddhist Study Center

July 23-27 BSC Summer Session
Dr. Ken Tanaka Monday - Friday 6:30 - 9:00 pm
Location: Buddhist Study Center

Check the Buddhist Study Center website
for more information:
bschawaii.org

**Hongwanji
Radio Programs
JUNE 2018
KZOO 1210 AM
Japanese Language
Saturday at 7:30 AM**

- 02 Rev. Tomo Hojo
- 09 Rev. Kojun Hashimoto
- 16 Rev. Daido Baba
- 23 Rev. Joshin Kamuro
- 30 Rev. Yuika Hasebe

Betsuin Services

Asaji Service 8:00 AM

- 03 Rimban Toyokazu Hagio
- 10 Rev. Yuika Hasebe
- 17 Rev. Joshin Kamuro
- 24 Rev. Yuika Hasebe

Dharma School 9:00 AM

- 03 Rev. Arthur Kaufmann
- 10 No Dharma School
- 17 No Dharma School
- 24 No Dharma School

**Adult English Services
10:00 AM**

- 03 Rev. Yuika Hasebe
- 10 Rev. Joshin Kamuro
- 17 Rimban Toyokazu Hagio
- 24 Rev. Sol Kalu

Nicchu Service 1:00 PM

- 03 Rev. Joshin Kamuro
- 10 Rimban Toyokazu Hagio
- 17 Rev. Yuika Hasebe
- 24 Rev. Joshin Kamuro

**Dharma School Starts
Summer Vacation
on June 10!**

In Memoriam



APRIL 2018

The Hawai'i Betsuin extends its deepest sympathy to the families of the following members who recently passed away. JUNE the family members find solace and comfort in the Nembutsu. Namo Amida Butsu

6/1/2017 . YOKOMOTO, John Masaru (92)

3/11/2018 SASANO, Hazel Harumi (95)

3/19/2018 AKAHOSHI, Doris Yoshie (96)

- | | |
|----------------------------------|--------------------------------|
| 02 KAWAMURA, Minoru (92) | 11 SUYEMOTO, Amy Misao (97) |
| 02 KUROZUMI, Mitsue (96) | 12 KAKAZU, Kenneth S. (84) |
| 04 MAMIYA, Colin Iwao (56) | 12 OGUMA, Elsie Emiko (88) |
| 04 SATO, Kimiko M. (99) | 14 IINUMA, Michelle Shoko (42) |
| 05 MORITA, Henry Sadao (76) | 15 ODA, Margaret Yuriko (93) |
| 06 TOKUDA, Yoshihiro (95) | 26 OSUMI, Shiro (70) |
| 07 SAKAI, Kazuo (95) | 26 TOMOMITSU, Kay Keiko (92) |
| 08 AOYAMA, Kimiko (98) | 28 IHARA, Iwako (102) |
| 10 OSHITA, Masako (97) | 29 HASHIMOTO, Joyce K. (99) |
| 11 OYAMA, Richard Masayoshi (85) | |

2018 Memorial Service Schedule

2018 is the memorial year for those who passed away in:

2017 – 1 year	2006 – 13 year	1986 – 33 year
2016 – 3 year	2002 – 17 year	1969 – 50 year
2012 – 7 year	1994 – 25 year	1919 – 100 year

Nursing Home Services for JUNE 2018

- 07 Hale Nani – Rev. Hasebe
- Hale Ho Aloha – Rev. Kalu
- 08 Kuakini – Rev. Hasebe
- 14 Maluhia – cancelled (State Ministers Seminar)
- Liliha – cancelled (State Ministers Seminar)
- 22 Leahi – Rimban Hagio
- 28 Nuuanu Hale – Rev. Kaufmann



The great practice is to say the Name of the Tathagata of un-hindered light. This practice, comprehensively encompassing all practices, is perfect and most rapid in bringing them to fullness. For this reason, it is called "great practice." Saying the Name then breaks through all the ignorance of sentient beings and readily brings all their aspirations to fulfillment. Saying the Name is in itself mindfulness; mindfulness is nembutsu; nembutsu is Namo-amida-butsu.

-Shinran Shonin