



1727 Pali Highway  
Honolulu, Hawaii 96813

# GOJI

Vol. 77 No. 03



MARCH 2022  
NEWSLETTER  
of the  
Honpa Hongwanji  
Hawaii Betsuin  
hawaiibetsuin.org

2022 Slogan:

“Building Healthy  
Sanghas: Connecting  
with Others”

## BETSUIN MINISTERS

Chief Minister  
Rev. Tatsuo Muneto

Fuku-Rimban  
Rev. Yuika Hasebe  
Ministerial Staff  
Rev. Sol Kalu  
Rev. Shingo Furusawa

## Betsuin to Observe Spring O-Higan March 20th; Speaker will be Rev. Mieko Majima of the Kapaa Kauai Hongwanji Mission



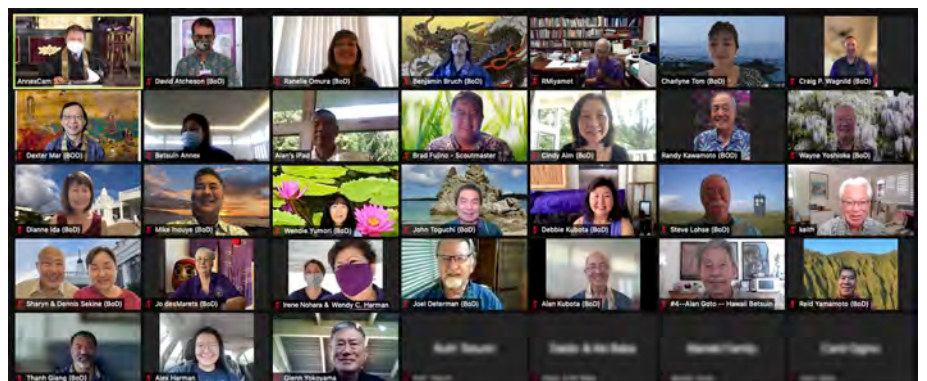
Honpa Hongwanji Hawaii Betsuin will observe the 2022 Spring O-higan or vernal equinox on March 20, 2022 at 9:30 a.m. online via Zoom due to the continuing restrictions imposed by the ongoing corona virus pandemic, now entering its third year.

This year, our guest online speaker will be the Rev. Mieko Majima, the currently-assigned overseeing minister for the Kapaa Hongwanji Mission on the island of Kauai. The title of her Dharma message is: “Take Me to My Homeland.”

Rev. Mieko Majima was born in Nagoya, Japan and grew up in the Presbyterian Christian school system. She received Tokudo ordination in 1978 and Kyoshi in 2012. After graduation from Ryukoku University, she worked for private publishers as a researcher, editor/translator, and localization specialist until 2010. She is currently a researcher at Ryukoku University and is preparing her Ph.D. thesis on “Visualization of Buddha in Contemplation/ Zen sutras in Central Asia.” As of March 2022, she is the resident minister of Kapaa Hongwanji Mission and a minister assistant at the Office of Buddhist Education.

Following the O-higan Zoom service will be a Dharma discussion with the guest speaker, Rev. Majima. Online viewers and the in-person audience may participate in the discussion. Please join us as we observe Spring O-Higan!

## Betsuin Installs Officers and Directors for 2022-2023 via Zoom Service



Hawaii Betsuin’s officers and directors for the 2022-2023 board term were installed by Rimban Muneto on January 30 after the English-language online service held on Zoom. They held their own candles or pen lights at home symbolizing hearts illuminated by wisdom and compassion of Amida Buddha. Rimban asked them to carry out their responsibilities for the entire membership with spiritual guidance from Amida Buddha. For a complete list of board members, see [hawaiibetsuin.org/board](http://hawaiibetsuin.org/board).

## Dharma Message: “O-Higan, the Other Shore of Enlightenment” Rev. Sol Kalu

Two times a year, in the spring and fall season, Buddhists in Japan observe O-Higan, a holiday marking the arrival of the spring and fall equinoxes, when both day and nighttime hours become of equal length and thus a state of equilibrium or balance exists. The word “O-Higan” is a translation of the Sanskrit word “paramita” and it means “arriving on the other shore.” It signifies “getting across.” Buddhism teaches that the world in which we live, called the impure world or saha realm (literally realm of endurance), is a place of suffering and troubles. In this schema, the saha world is located on this side of the shore. The source of all suffering — the three paths of

earthly desires, karma and suffering — is likened to a great river. The life condition of enlightenment is likened to the other shore. In order to cross from the impure world, over the life and death sufferings of the great river, and reach the Pure Land on the other shore, people must embark upon the boat of the Buddha’s teachings. This is the most common way of teaching O-Higan, that is using the boat of the Dharma to get to the other shore, or in Jodo Shinshu, the boat is not only the Dharma but the Vow of Amida Buddha is also the great ship. In the Parable of the White Path, there is no boat, no ship that ferries the man on the shore of samsara to the Pure Land of Nirvana on the other side. Rather the way to cross is that narrow path in-between two raging rivers of fire and water, with Amida Buddha on the Pure Land side beckoning a traveler, pursued by wild beasts and bandits to cross without fear, and Shakyamuni Buddha on the opposite shore encouraging the traveler to continue to move forward. Why are the voices of both Amida and Shakyamuni Buddha encouraging him to cross without hesitation? Precisely because the traveler is beset by fears and doubts to take more steps towards enlightenment: fear of falling on either side of the river, fire on one side and water on the other and doubts about the Power of the Buddha’s Vow to safely guide him across the difficult path. It took the traveler a leap of faith to boldly proceed, never look back and just follow straight towards Amida’s guiding voice and thus he reached the other shore safely.

Using the other metaphor of crossing the ocean of birth and death by boarding the boat of the great Vow of Amida, we find the same two hindrances to enlightenment that make us hesitate to even walk the ramp and

board the ship. We fear that the boat might sink midway to the shore of Nirvana, and feel doubt in Amida Buddha’s vow that no matter what happens during the journey, we are assured of reaching the Pure Land without any difficulties. Such doubts and fears spring from the unenlightened mind, the mind that Shinran Shonin called the dark mind, the mind of the foolish being or bonbu, in the world of delusion which is considered as a source of suffering. For Shinran Shonin, the dissolution of the dark mind through the light of the Buddha’s wisdom gives rise to the diamond like mind of trust, shinjin, that once attained cannot be reversed and thus is the decisive cause for birth in the Pure Land.

The gap, indeed, wide and treacherous is what separates us from the Pure Land of Amida. But in ultimate reality, no such gap exists, for the teachings say that the Pure Land has no boundaries, that the Light of Amida’s Pure Land extends to all directions without hindrance. So why is there a gap? The gap is not from Amida’s side but rather something that our foolish minds constantly create. It is a gap composed of our blind passions or bonnou. Once our dark ignorant minds are cleared by the Buddha’s wisdom, we no longer see a threatening gap between our realm and the Pure Land. We can access the Pure Land in and out, in our minds and when the time comes to leave our physical bodies, we will become part of that Pure Land in totality. There is no more ship to board, no more treacherous waters to cross for we have already reached the Other Shore. Our journey to the O-Higan is complete. Namo Amida Butsu!



### GOJI

The **GOJI** is a monthly publication of the Honpa Hongwanji Hawaii Betsuin, Tel. (808) 536-7044. There is no newsletter published for the month of AUGUST

#### DEADLINE:

Articles must be submitted no later than the 10th of the month prior to publication by e-mail ([goji@hawaii.betsuin.org](mailto:goji@hawaii.betsuin.org)), mail (1727 Pali Hwy, Honolulu, HI, 96813) or fax (808-536-0919). Address submissions to the **GOJI**. Please include your name and contact information. Original images should be labeled on the reverse side with caption and return information.

#### GOJI STAFF:

Editorial: *Jo desMarets; Dianne Ida, Randy Kawamoto, Rev. Shingo Furusawa, Japanese section editor* Production: *Colleen Kunishige, David Atcheson;* Circulation: *Colleen Kunishige, Elmer Cagoan;* Contributing reporters from *Hongwanji Mission School, Buddhist Women’s Association, Dharma School & Parents, Project Dana, Wednesday Gang and Gals, Green Team, Boy Scouts, Girl Scouts, Pacific Buddhist Academy, Betsuin Board and Social Concerns, and the Kyodan.*

The opinions expressed by individual contributors are their own and do not necessarily reflect those of the Honpa Hongwanji Hawaii Betsuin.

# Jon K. Matsuoka Named Hawaii Betsuin's New Executive Director

*(This article is republished from a post at hawaiihetsuin.org.)*

Hawaii Betsuin has some exciting news to share: Dr. Jon Matsuoka will be the temple's next Executive Director! Jon brings a wealth of executive leadership experience, including 10 years as Dean of UH Mānoa's Thompson School of Social Work and 6 years as President and CEO of the Consuelo Foundation. His most recent position was as Vice Chancellor for Academic Affairs at Hawai'i Tokai International College.

The opportunity at Betsuin attracted Jon in part due to his "belief that Buddhist principles are critical to the promotion of peace in an era of profuse uncertainty."

Jon has deep ties to Honpa Hongwanji

in Hawaii. A 25-year member of Moiliili Hongwanji, he currently chairs the statewide Living Treasures of Hawai'i Committee and serves on the advisory board of Project Dana. Jon's official first day at Hawaii Betsuin will be March 1. David Atcheson, currently serving as Interim Executive Director, will remain on staff during a transition period. "I'm eager to work with Jon," said David. "I've pledged my support as he settles into the executive director role."

Hawaii Betsuin's Personnel Committee worked closely with Inkinen Executive Search in a process lasting many months,



Dr. Jon K. Matsuoka

ultimately leading to a board-approved offer to Jon as our top-ranked candidate. Terms were approved by the Executive Committee on January 29, the night before our 2022 General Membership Meeting — just in time for Jon to attend and be introduced at the Zoom meeting.

In this time of great change and possibility for Hawaii Betsuin, causes and conditions have brought Jon Matsuoka to us as the temple's next executive director. Let us welcome Jon into our sangha as a partner in realizing the Hawaii Betsuin vision: "A welcoming place where all share the joy of living with gratitude and compassion inspired by Buddhist values."

*Submitted by David Atcheson  
on behalf of the  
Hawaii Betsuin  
Personnel Committee*

## Message from Jon K. Matsuoka

Aloha!

I am humbled and excited to accept the Executive Directorship at Betsuin, and want to express my gratitude for the excellent work of those who preceded me. It is not something I imagined doing at this point in life and career but appreciate the responsibilities and challenges surrounding the role. A pandemic, political and racial strife, climate change, imperil our children's future, and I believe Buddhist principles and values offer a way through formidable times. Social harmony and balance, environmental kinship, and ancestral know-how are aspects of mindfulness necessary to guide us to higher planes of spiritual prosperity and peace.

With this opportunity, it will be my professional and personal goal to pursue the development of Buddhism's social, political, spiritual potential in Hawai'i and across society. I look forward learning and working together to move towards this reality.

Mahalo,

Jon K. Matsuoka



## BWA News and Events

**SPRING O-HIGAN:** The month of March is when we celebrate O-Higan. O-Higan in English translates into equinox. The dictionary explains equinox as either of the two times each year when the sun crosses the equator and day and night are everywhere of equal lengths, being about March 21 and September 25. Ask your minister to explain to you the reason why in Jodo Shinshu, O-Higan is celebrated. It would be of greater enjoyment if you searched and discovered the reason for yourself, so do it. Ask your minister. This year the vernal equinox begins on Sunday, March 20th.

“KUNG HEE FAT CHOY” to all of you. Aren't you glad you live in Hawaii? You celebrate welcoming of new year in English, “Happy New Year,” and in Japanese, “Akemashite Omedeto gozaimasu,” and in February it's Chinese celebration. We celebrate by eating mochi, ozoni, and Chinese mochi as well. Let us all hope 2022 will be a great year.

**GAS THAT WE HANG ON TO:** At the last Hoonko service in which Shinran Shonin's memorial service was the focus, the Bishop Thomas Okano spoke about Shinran Shonin. He was born over eight hundred years ago, yet even then Shinran Shonin mentioned that all human beings have GAS. The G stands for GREED, and A stands for ANGER, and S stands for STUPIDITY. These are the attributes of human beings. Unfortunately, this is true, for we are typically GAS in all aspects. Now that we have heard this from Bishop Okano, how about making a genuine U turn and trying to change our lifestyles? How about making G stand for GENEROSITY, and be willing to be generous from

now on. Make a larger donation to the church. Don't be so greedy. You can be generous in many aspects. You can be generous from your heart, as well as with material things. Your nice smile is one form of generosity. A smile will make the receiver happy.

Change the A, Anger into AMIDA and recite the Nembutsu whenever you can. Instead of building up anger, you will attain calmness in reciting the Nembutsu for AMIDA. Then, instead of STUPIDITY, how about settling down into SERENITY and calm yourself down by reciting the Nembutsu. The second set of GAS is what you should live by. How is that? As we age it is not worth getting greedy or angry. Life is too short to harbor stupidity. Listen to the teachings of Shinran Shonin and get smart.

Thank you, Bishop Okano for reminding us what Shinran Shonin said which still applies to all of us today. Fortunately we are able to make changes today and live a better life. Namo Amida Butsu. Every Sunday when you listen to the minister's sermon, see what you can apply for yourself. Try to remember at least one thing that the minister spoke about, and see how you can apply this thought into your life.

Jodo Shinshu Buddhism is teaching the way of life for the living and not only for the dying. Many of us think that our religion was for the dying because we honor them after death in their first, third, seventh year memorial services and so on. Memorial services are

## Fujiko Motobu

respectful services in memory of our deceased. Birthday celebrations are held while the person is alive, but after their death, memorial services are held. Does anyone have birthday celebrations when the person is deceased?



The corona virus epidemic is still on the rampage and yet we do not get the complete information. Are the elder ones dying? Are the middle-aged ones dying? Are there more men or women dying? Are the children in the list? Is it because they have not gotten vaccines? Or is it because of lung diseases such as pneumonia? There are many unanswered questions. Currently the entire universe is in a tremendous disaster with illnesses, natural disasters such as forest fires, floods, hurricanes, volcanic eruptions, tsunami, and climate change. Schools operate differently. Students and teachers function differently than in previous generations. Living as a human being is not an easy matter. The older we get, the more obstacles we meet when our mind and body do not react fast enough which causes accidents to occur. Speed is one thing that we lose in old age. People 100 years in age are still running a marathon, but not with speed. They may come in last place but will finish.

Men and women are vying in similar sports activities, for there is no such thing as for men only or for women only. Competitions are among men vs. men and women vs. women. It is not men vs. women. It is being

continued on page 5

## More From the Betsuin BWA

### BWA Gratitude

Cindy Alm, President

**Hosha:** As a token of our gratitude, we resumed light housekeeping in the Hondo after a pause of nearly two years due to the pandemic. Mahalo to our volunteers who will be polishing, dusting and vacuuming on the first Saturday of the month through May.

**Dana Day:** Thank you for your generous donations to support community nonprofit organizations that benefit youth, women or elderly. This year's recipients will be Adult Friends for Youth, Hawaii Foodbank, Homeless Outreach and Medical Education (H.O.M.E.), and perpetual awardee Project Dana. Additional awardee(s) will also be selected this year.

**Membership Activities:** Our sincere gratitude to our members for participating in our activities and events. You will find photo collages and videos on the BWA webpage of the Hawaii Betsuin website: <https://hawaiibetsuin.org/organizations/bwa/>

**Gratitude Reflections:** For inspiration to all, our members have shared gratitude reflections that are posted on our website: <https://www.hawaiibetsuinbwa.org/kokoromono>

### Hosha is back in motion: March "Team Hosha" Tackles Pali Hwy Grime In the Hondo!



Thank you very much to the BWA ladies and gentlemen for taking the leadership for cleaning the Hondo after two years!! The Hondo floor was covered with a sticky, black dust from the Pali Highway, but our great ladies cleaned it thoroughly! The Betsuin Hondo was filled with energy and the air was so refreshed after the cleaning. Hosha is the once-a-month temple cleaning on the 1st Saturday of the month. If you are interested in joining Team Hosha, please leave a message for Claire Groom at the Betsuin office!

### BWA News and Events continued from page 4

noted today that some of the sports for men recently taken over by women are exceptionally great, such as surfing. A woman surfer came in first place. For the longest time women were considered as second-class citizens; however, that has changed. Even at the temple the BWA women are the leaders. Without their hard work, the temple will slack in its operations. In other words, we need the cooperation of both men and women to function well in this world. Men are invited to join the BWA organization today, so do not hesitate, and join us, men, for your assistance is very worthy and needed.

#### HOW ABOUT SOME HUMOR?

An old woman was extremely distraught after her husband passed away at age 95. She was 93 years old. She wished to be with her husband, so she called the doctor and asked him where the human heart was situated. The doctor told her that the human heart was a little bit below the left breast. She got her husband's revolver and shot herself below her left breast. An hour later she was taken to the hospital in an ambulance with a gunshot wound on her left knee.

**MEDICAL AIDE:** Did you know that OLEANOLIC ACID, a chemical found in raisins, is particularly effective in killing oral bacteria? EAT RAISINS. Oleanolic acid prevents the growth of two kinds of bacteria that can cause gum disease and it also prevents bacteria from adhering to the tooth surface and creating dental plaque. Eat a few raisins daily instead of eating candies or cookies.



## Scouting News



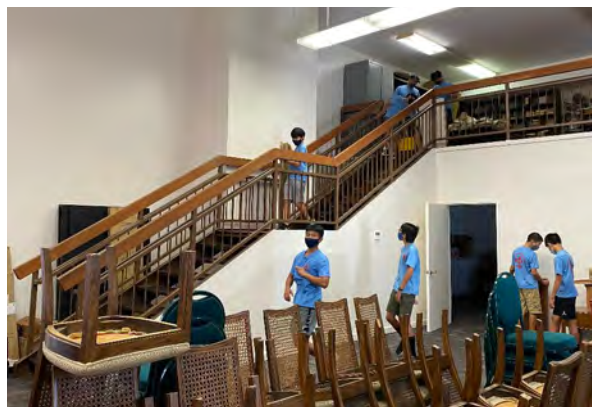
**Boy Scout Troop 49**

**Lesley Yoshimori**

**Happy Chinese New Year From Troop 49!**

2022 is in full swing and so is Troop 49. During the month of January the troop has continued to hold weekly meetings and focused on First Aid skills. Scouts reviewed essential components of a first aid kit and different situations that require use of those skills.

In addition to meetings, the Scouts supported the Martin Luther King Jr. Food and Feminine Hygiene drive by setting up two 20x20 tents to keep volunteers protected from the elements and assisted with collecting and organizing the donated items. The Troop



also participated in cleaning the temple by moving furniture and miscellaneous items from the mezzanine to the bottom level. The Scouts then straightened out both of the troop trailers to keep things neat and organized.

The theme for the month of February is Fitness and Outdoor activities. This will be another busy month for our scouts where they will continue to prep for their overnight camp at Malaekahana and prepare for the bridging over of the Arrow of Light (AOL) cub scouts from Pack 49. Life Scout Noah Zane will also be completing his Eagle Scout Project where he will be building benches for the HMS and placing paver stones next to the temple side tunnel entrance.



**Girl Scout Senior Troop #415 and Cadette Troop #383**

**Honolulu Marathon First Aid Station**

**Carlie Siu**

**Senior Troop 415**

Scouts from Senior Troop 415 and Cadette Troop 383 volunteered for the 2021 Honolulu Marathon in December, helping to man the 1st first aid station of the race. Due to COVID, there were only about 10,000 runners, which is only a third of the number of participants in previous years. Prior to the marathon, the scouts helped the first aid station to adhere to COVID-19 restrictions, completing a Girl Scout Council COVID-19 waiver, filling out a health screening, and getting their temperatures checked. All volunteers were also required to be fully vaccinated.

The morning of the marathon, scouts met at 3:00 am to begin setting up the station. During the marathon, the girls logged down bib numbers and other important treatment information as runners were being treated in the station. The information the scouts helped to log down is a crucial part of helping the event remain organized, and to keep track of the treated runners throughout the entire marathon.



## More Scouting News

### Girl Scout Cadette Troop 383

On January 15, 2022, Girl Scout Cadette Troop 383 were the special guests at the Sea Life Park Seabird Sanctuary blessing. The newly renovated Seabird Sanctuary was unveiled to the public. The Seabird Sanctuary is used for taking care of birds who have been hurt in the wild. Sea Life Park has been rescuing and releasing native seabirds since the 1970s. They have been able to help over 4,000 seabirds since 2005. In 2018, scouts from Cadette Troop 383 (who were Brownies at the time) used proceeds from their Girl Scout Cookie sales to help support this program. They donated 20 pet carriers to the Seabird Sanctuary which were used to transport injured animals. Scouts from Cadette Troop 383 were recognized at the blessing ceremony for their efforts in supporting and giving back to their community. As a special treat, the Cadettes and their family members were given free admission to the park for the day. The Scouts were honored to be there and learned a valuable lesson about how their efforts helped to sustain this program.



Miyaka Nishihira  
Cadette Troop 383

## Honzan to Host Shinran Shonin's 850th Birthday In 2023

In 2023, Honzan in Kyoto will host a joint celebration to commemorate Shinran Shonin's 850th Birthday and 800th anniversary of the establishment of our Jodo Shinshu tradition. When we solemnly reflect about those long 800 and 850 years, words can't express this wonder of causes and conditions, which brought us to encounter the supreme teachings.

The completion of Kyogyoshinsho (The True Teaching, Practice, and Realization of the Pure Land Way) marked the establishment of the Jodo Shinshu tradition. The date is considered to be in the year 224, when Shinran Shonin was 52 years old. In the preface of the Kyogyoshinsho, Shinran Shonin stated, "Ah, hard to encounter, even in many lifetimes, is the decisive cause of birth into the Pure Land, Amida's universal Vow! Hard to realize, even in myriads of kalpas, is pure



shinjin that is true and real! If you should come to realize this practice and shinjin, rejoice at the conditions from the distant past that have brought it about."

These passages started with "Ah" to illustrate the indescribable joy of Shinran Shonin when he felt the embrace of the Great Compassion of Amida Buddha. We, who are living in this world so long after Shinran Shonin's passing, are also embraced

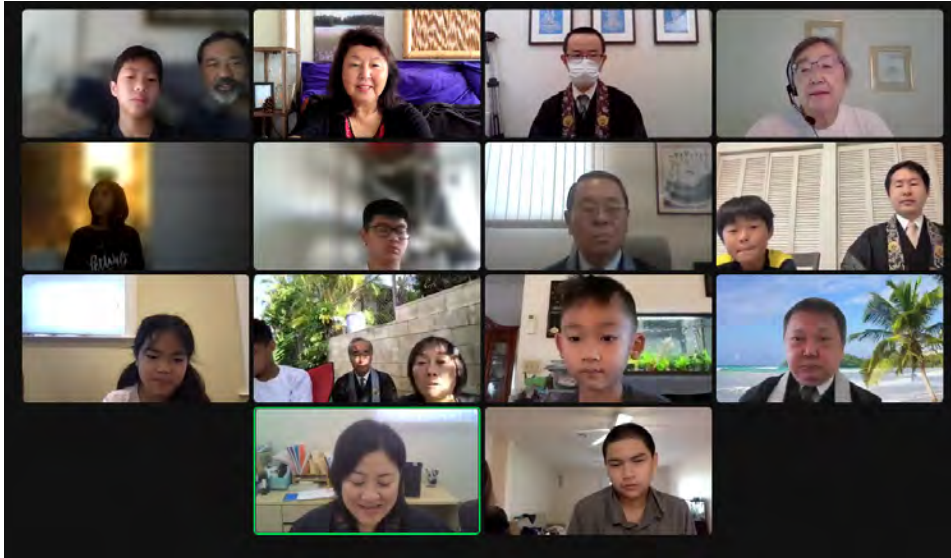
by the same Great Compassion, which embraced Shinran Shonin and made him express his indescribable joy as "Ah."

During this double commemoration period, one more time, let us together reflect on the Great and Warm Compassion and Wisdom which embraces us always. Please don't miss this wonderful opportunity to join the celebration. Please contact Betsuin for registration information.



# Dharma School News

Debbie Kubota



favorite foods, attend same school, in same scout troops, play the same sports, like the same things—foods, books, etc.) We plan to continue our “Connecting with Others” activities during future sessions so that we can take a closer look on how we are all connected.

On Sunday, January 16, we commemorated Ho'onko, the passing of Shinran Shonin. Our emcee was Reio Doktor from Jikoen, and our aspiration reader was Christopher Leu. Retired Reverend Thomas Okano was our guest speaker. For our Dharma

Virtual Dharma School services and activities are continuing every Sunday at 9:00 am, with families from the Betsuin and Jikoen Hongwanji participating on a regular basis.

We started our 2022 Dharma School year with our first service and activity on Sunday, January 9. We were happy to welcome Rinban Tatsuo Muneto to our Betsuin ohana. He has already been attending our Dharma School Services on a regular basis. For our Sunday service, Talin Giang was our emcee and Vincent Saito was our aspiration reader. Reverend Shingo Furusawa gave a wonderful Dharma Message to depict our 2022 slogan, “Connecting with Others.” It was a good reminder that all beings and all things are connected to each other, so we need to help and support each other. If we fight, what will happen?

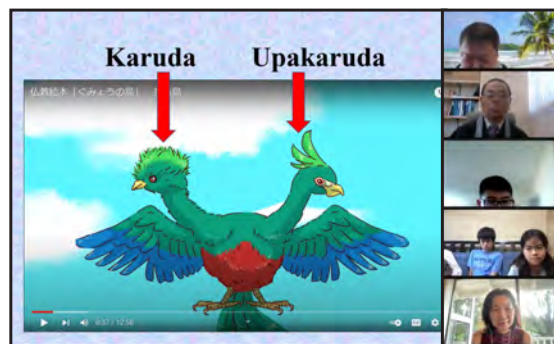
We become selfish and forget our connections. To demonstrate this, he shared the story of the two-headed bird, Karuda and Upakaruda. Upakaruda got so angry because Karuda always got

to do the things he wanted to do that he poisoned Karuda, not realizing they were connected to one body, and both of them die. If we become selfish, fights and wars will destroy us. Reverend Furusawa reminded us about the Golden Chain of Love, encouraging us not to fight, and to help and support each other, and listen to Amida Buddha’s teachings to realize our connection with others. After the service, our Dharma School activity was for our students and parents to come up with the various ways we can be connected to others. (Hawaii Betsuin, HHMH,



School activity, we selected some of our favorite quotes from Martin Luther King, Jr., to honor him on his birthday. “I have decided to stick with love. Hate is too great a burden to bear.”

“If you can’t fly, then run. If you can’t run, then walk. If you can’t walk, then crawl, but whatever you do, you have to keep moving forward.” “The time is always right to do what is right.” We used Google Jam Boards to convey our thoughts about these quotes. Reverend Yuika Hasebe was our speaker on Sunday, January 23, with Talin Giang as our emcee and Christopher Leu as our aspiration reader. Reverend Hasebe’s message focused on our 2022 slogan, “Connecting with Others.” She encouraged us to always speak with friendly words and to treat others with kind and gentle hearts. By doing so, we can connect to each other and our community will be harmonious and peaceful. Our Dharma School activity was to see how we are all connected





## 2022 SPRING VIRTUAL NEMBUTSU SEMINAR

Sponsored by the Honolulu &amp; Oahu Hongwanji Councils and the Office of Buddhist Education

# Building Sangha Together:

## *Nurturing Dharma - Centered Communities*

Saturday April 30 | 9a - 11a (HST)

Community has always been a strength of Shin Buddhism in America. Innovative and responsive community building grounded in the Dharma has enabled temples to thrive for more than a century. However, the traditional ways of building Sangha have been less effective as we face new challenges during this time of pandemic. Rev. Blayne will explore what it means to be Sangha in today's world. How do we journey together as spiritual friends? And how can we nurture an authentic community of fellow travelers inspired by the Buddha's teachings? Participants will have an opportunity to cultivate Sangha through a facilitated group discussion.



**Reverend Blayne Higa**  
Kona Hongwanji Buddhist Temple

“Bring your whole self as we learn & grow in the Dharma together.”

### AGENDA

9:00am - 9:05am:  
Welcome

9:05am - 9:45am:  
Guest Speaker Rev. Higa

9:45am - 9:55am:  
Q & A Session

9:55am - 10:00am: Break

10:00am - 10:30am:  
Breakout Group Discussion

10:30am - 10:55am:  
Breakout Group Sharing

10:55am - 11:00am:  
Closing

Until 11:30am: Free “Talk Story” Time

REGISTRATION IS FREE | Deadline April 22, 2022

Please note that the seminar will be recorded & uploaded. If you do not wish to be shown, please keep your video off during the seminar.

Donations are welcome—  
Funds will be designated for Buddhist Education.



Scan here

OR

Please visit link:  
[bit.ly/hhmhdonate](https://bit.ly/hhmhdonate)

Please make checks payable to: Oahu Hongwanji Council.  
Mail registration form & checks to: Mililani Hongwanji, Attn:  
Nembutsu Seminar, P.O. Box 893308, Mililani, HI 96789

#### QUESTIONS?

Please contact Mililani Hongwanji office (808) 625-0925.

Visit our Dharma Hub for more statewide educational offerings  
<https://bschawaii.org/calendar>

Name: \_\_\_\_\_

Temple/Affiliation: \_\_\_\_\_

Email: \_\_\_\_\_

Phone Number: \_\_\_\_\_

How did you hear about this Seminar? My Temple (email / newsletter) | Temple or other Website | Social Media | \_\_\_\_\_  
Circle one OR if other, pls indicate in space

Age Range: Please circle one Under 26 | 26-41 | 42-57 | 58-67 | 68-76 | 77+

# Headquarters Connections

## News from the Honpa Hongwanji Mission of Hawaii

Headquarters Update and statewide Ka Leo Kāhea (The Calling Voice) newsletters are available on the HHMH website, <https://hongwanjihawaii.com/>.

## Delegates gather for the 2022 Legislative Assembly



The 110th Giseikai, the Legislative Assembly of the Honpa Hongwanji Mission of Hawaii (HHMH), was held by Zoom on February 10-12, 2022. Ministers and lay representatives from temples throughout Hawaii gathered to attend services, share experiences, hear from leadership, and vote on resolutions. Here are a few highlights from this year's annual Legislative Assembly, including messages from Jodo Shinshu leaders and Resolutions adopted.

**Bishop Chiko Iwagami**, Governor General of Jodo Shinshu Hongwanji-ha, sent gratitude for the efforts of all in the service of Shin Buddhism and our temples, condolences and sympathy for Covid suffering, gratitude for the workings of the Dharma, and hopes that the Honpa Hongwanji Mission of Hawaii will continue to prosper.

**Bishop Eric Matsumoto** expressed Welcome and Aloha to all and gratitude for our connections with Buddha and Shinran through Nembutsu, as well as with each other through this annual Assembly. He reminds us that change is normal and encourages us to work together in a world that is waiting for Buddhism and for Shinran Shonin.

**Dr. Warren Tamamoto**, HHMH President, also expressed Welcome, thanks to all for adapting during the last two years, and gratitude for Buddhism and connections in hard times. Change is constant, but so is Buddha's compassion! Let us consider how to attract new members to the Shin Buddhist path of gratitude and community.

### All Resolutions Were Adopted!

Resolutions adopted by the 110th Lay Assembly include passing the statewide budget, amending Bylaws to eliminate conflicting language, consolidating Papaaloa Hongwanji and Honohina Hongwanji, establishing a statewide newsletter, establishing a statewide online calendar, establishing an annual endowment campaign, providing an annual subsidy to Pacific Buddhist Academy, providing capital funds for Hilo Hongwanji new preschool construction, and condolences and appreciations.





**HMH Bookstore Is Now Open!**

Books on Buddhism, Onenju, Incense, and Gifts, etc.

Business Hours:

Tuesday - Friday:

8:00 a.m. to 3:30 p.m.

Saturday: 8:30 a.m. to Noon

Sunday and Monday: Closed

Phone: (808) 522-9202 / Email:

hqbooks@honpahi.org

1727 Pali Highway,

Honolulu HI 96813

**NOTICE TO SANGHA MEMBERS**

If you are interested in attending in-person Sunday English services at 10:00 am, please contact the Betsuin office for more information.

Limited seating may be available; all COVID protocols will be strictly followed.

Masks and vaccinations will be required.

**Dharma School News continued from page 6**

by creating word clouds about our favorite sandwich filling, dinner dish and dessert.

For our January 30th service, the Tse-Castros helped with the service. Kim was our emcee and Dean was our aspiration reader. Jovie Yoshioka, our Dharma School supervisor, shared a video, "Ripple - To the Good Samaritans in Our Lives," with a message of being connected with others and paying it forward. We continued sharing how we are connected by making more word clouds, this time about our favorite colors, favorite drinks, birth months and which animals we would want to be. It was fun to see how many of us like the same things.

February 6th was Scout Sunday, so we did not have any Dharma School Service/Activity. On February 13th, the Furuyamas helped with the service, Keiden as the emcee and Naya as the aspiration reader. Reverend Kalu's message was about Valentine's Day and for our Dharma School activity, we played Valentine's Day Bingo. We have lots of fun activities planned for 2022. Our services and activities are open to all generations across Hawaii and on the Mainland. Feel free to join us, anytime! If interested, please contact our Betsuin office.

Hope to see you in person, or online, with us very soon!

**Betsuin DIALOGUE Project Meeting MARCH 10, 2022**

All Welcomed!



If you are interested in exploring social concerns with others through a Buddhist lens, then the Hawaii Betsuin DIALOGUE Project is for you! The next DIALOGUE is Thursday, March 10, 2022. Celebrating Earth Day, the topic will be "EcoDharma." We plan to explore interfaith environmental perspectives and discuss a selection from David Loy's "EcoDharma: Buddhist Teachings for the Ecological Crisis" as we consider how Buddhism can help us respond to the greatest challenge that humanity has ever faced.

Please visit [hawaii.betsuin.org/dialogue](http://hawaii.betsuin.org/dialogue) to register to receive participation info and brief readings, to suggest future DIALOGUE topics, or to ask questions. DIALOGUE is a project of Hawaii Betsuin's Social Concerns Committee. Hawaii Betsuin's Social Concerns/Green Team met

**Trees, Please!**

on Thursday, Feb 17, to begin planning Earth Day 2022 activities for Hawaii Betsuin. In fact, the Green Team is planning two categories of tree activities



lonomea tree



'ilima shrub

for 2022. First, we're planning to make native trees and plants available free to Betsuin families around Earth Day in April and Arbor Day in November, for home planting or gifting. Consider giving a native tree as a birthday present! We're also planning opportunities for tree planting fieldtrips and nursery workdays for Betsuin families.

Plant a tree, raise a kid, save a planet! If you or your group are interested in planning or participating in Earth Day 2022 activities, please contact Steve Lohse, [lohse@hawaii.edu](mailto:lohse@hawaii.edu).



## In Memoriam



### Radio Programs MARCH 2022 KZOO 1210 AM Japanese Language Saturday at 7:30 AM

- 05 Rev. Ryoso Toshima  
12 Rimban Tatsuo Muneto  
19 Rev. Mieko Majima  
26 Rev. Yuika Hasebe

### NOTICE:

The Betsuin is scheduling in-person funerals and memorial services with a limited number of in-person attendees. Other service options are available. Please call the Betsuin office at (808) 536-7044 for current information and to plan for your family's needs.

### Information Regarding Sunday Services

The 9 a.m. Dharma School service and the 10 a.m. English service continue for now on Zoom. For speakers of Japanese, emailed messages are available -- please contact the office.

For current information on Betsuin services, including Zoom connection details, see the online calendar at [hawaiiibetsuin.org](http://hawaiiibetsuin.org). You may also check the Betsuin Bulletin sent by email on Fridays (subscribe at [hawaiiibetsuin.org](http://hawaiiibetsuin.org)/email-signup/). Or, call the office. Recorded services are available on the Hawaii Betsuin YouTube channel, with "premieres" on Sundays at 11 a.m. (some exceptions).

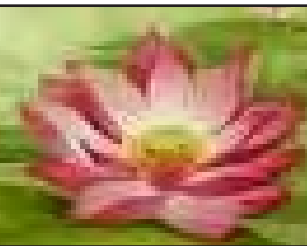
The Hawai'i Betsuin extends its deepest sympathy to the families of the following members who recently passed away. May the family members and friends find solace and comfort in the Nembutsu. Namu Amida Butsu

- 9/23/2020 HIGA, Kenji "Jerry" (94)  
12/21/2021 YAMAMOTO, Sueko Itomura (85)  
12/26/2021 FUJINAKA, Mabel Miyoko (88)

### JANUARY 2022

- 01 FREITAS, Norie Izumi (83)  
03 OKIMOTO, Jeffrey Tsuneo (73)  
05 OSHIRO, Velma Meiko (96)  
05 SUMIDA, Wilfred Yasuo (82)  
05 YOSHIMOTO, Ethel Sumie (92)  
17 CHUN, Gertrude Fumiko (81)  
18 KISHIMOTO, Harold Isoichi (83)  
19 DUNG, Satoko Kumazaki (91)  
21 KAWADA, Doris Kazue (96)  
21 KOBATAKE, Thelma Shizue (95)  
22 AKITA, Sumiko (96)  
22 KONO, Calvin Takeo (75)  
22 MIYAMOTO, Gloria Matsue (78)  
24 GIANG, Tony To (79)

**Nursing Home Services  
are cancelled until  
further notice.**



### 2022 Memorial Service Schedule

2022 is the memorial year for those who passed away in:

2021: 1st year	2010: 13th year	1990: 33th year
2020: 3rd year	2006: 17th year	1973: 50th year
2016: 7th year	1998: 25th year	1923: 100th year



The great practice is to say the Name of the Tathagata of un-hindered light. This practice, comprehensively encompassing all practices, is perfect and most rapid in bringing them to fullness. For this reason, it is called "great practice." Saying the Name then breaks through all the ignorance of sentient beings and readily brings all their aspirations to fulfillment. Saying the Name is in itself mindfulness; mindfulness is nembutsu; nembutsu is Namu-amida-butsu.

-Shinran Shonin