

A documentary film that won high praise at two film competitions in Hawaii



Go for Broke!

- Memories of Hawaii Japanese Nisei -

Directed by Hiroyuki "Matsugen" Matsumoto

We saw the Nikkei community in old Hawaii, we experienced the truth of war....

All of our memories are told here and now...

Honolulu
Screening

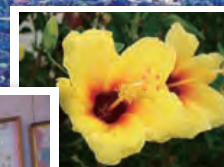
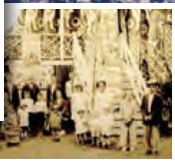
@Honpa Hongwanji Hawaii Betsuin Social Hall

Mar. 10(sun) 11:30~

Admission: Free

Please Donation

This is "another history of Japan" that records the precious testimonies of many Nisei who have continued to look at the history of Hawaii.



Director/Screenplay/Cinematography: Hiroyuki Matsumoto, Producer: Rie Nakano, Editing & MA: WINK2, Music: Sandy, Yuki "Alani" Yamauchi, Buckie Shirakata Jr. & Dorothy Maki, Narration: Robert Harris 2012/English, Japanese/98 min. Production, Distribution: Non-profit Organization NAC-J. Supported by: Univers Foundation



<https://www.facebook.com/GoforBrokeHawaii>

NPO NAC-J's activities strengthen the "Kizuna" between Japan and Japanese American in Hawaii.

The purpose of NAC-J is to contribute to international exchange, promote understanding between the U.S. and Japan, and deepen U.S.-Japan relations by publicizing and educating the Japanese people about Japanese immigrants and their descendants Japanese Americans. The NAC-J also contributes to the promotion of Japanese culture by supporting cultural activities related to the transmission of Japanese culture to children of Japanese descent in Hawaii and abroad. Currently, we support and interact with the "Kansha Preschool" operated by the Nisei Veterans Memorial Center on Maui. In the future, we hope to expand this intergenerational preschool concept to other areas and establish friendly relations.

What is Kansha Preschool...

The only one preschool in Hawaii operate at the Nisei Veterans Memorial Center on the island of Maui, a facility built in honor of the service of Nisei veterans.

It was the accomplishments and sacrifices of the Nisei during the World War II that helped build the Japanese American community as we know it today. Maui's Nikkei community began Kansha Preschool to show appreciation for the Nisei, to promote awareness of the Nikkei, and to pass on the history and culture.

It was built with donations from the Japanese American community, the State of Hawaii, and foundations of Maui, and includes an adult day care center and an education center (In Hawaii, the donation style of helping each other is often referred to as "Kokua").

For an hour every day, they set aside time for the children to interact with the elderly at the day care. This gives the children a chance to learn about the Nisei, to care for the seniors, and to develop the Nikkei spirit. It is also thought to have a therapeutic effect on the elderly in the day care.



Please support NAC-J's activities.

Bank account in Japan

Intermediary Bank	Deutsche Bank Trust Company Americas NY BIC(SWIFT Code): BKTRUS33
Beneficiary Bank	Japan Post Bank Head Office Address: 3-1,Otemachi 2-chome,Chiyoda-ku,Tokyo 100-8793, Japan BIC(SWIFT Code): JPPSJPJJIRS BCHIPS UID: 427593
Payee	Account Number : 00220-2-49140 Name of Payee Account Holder : NAC-J Address : 607-201 Yamanouchi, Kamakura Kanagawa, 247-0062 Japan Telephone Number : 81-90-35011249

Paypal



<https://www.paypal.me/okagesamademovie>